

JAN 2026

Delta Plan Performance Measures

2025 Year In Review

Agenda Item: 8, Presentation
Meeting Date: January 22, 2026
Page: 1 of 23

Staff Panel:

Martina Koller, Program
Manager

Scott Navarro, Senior
Environmental Scientist

Hannah Chaney, Environmental
Scientist



**Delta
Stewardship
Council**

A CALIFORNIA STATE AGENCY

Performance Measures

- Required by the Delta Reform Act
- Measurable indicators of progress toward program goals and objectives
- Based on Delta Plan core strategies, policies and recommendations
- Establish metrics, baselines and dated targets
- Evaluate how well the Delta Plan is working



Featured Performance Measures

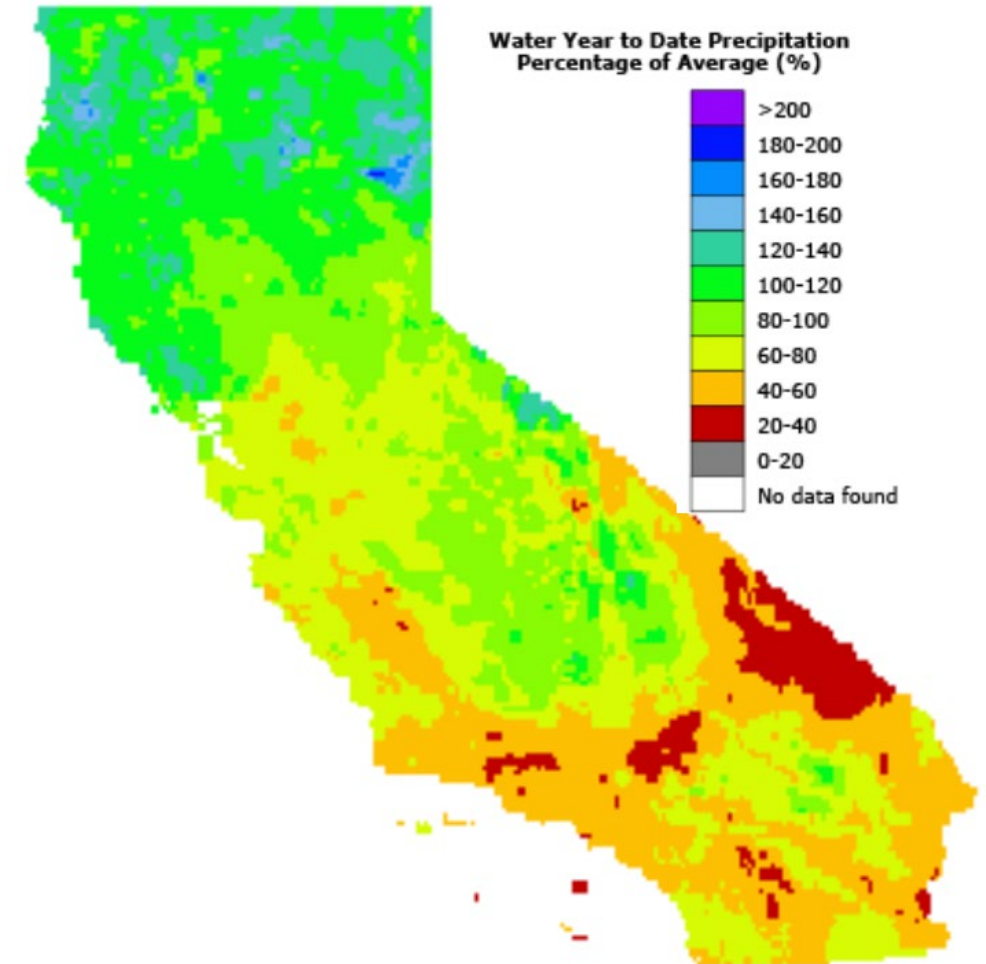
Selected based on recent data updates and management relevance

- Delta Ecosystem Restoration
 - Acres of habitat restoration projects over time
 - Funding for projects that enhance ecosystem function
- Salmon Doubling Goal
 - Central Valley Chinook Salmon natural production
- Nonnative Invasive Species
 - Nutria
 - Golden mussels
 - Mute swans
- Delta community participation in the National Flood Insurance Program

2025 Conditions

Water Year 2025:

- Follows two previous wet years
- Rainfall 96% of normal precipitation
- Variability within California:
 - Above average precipitation in Northern regions
 - Below average precipitation in Central and Southern regions
- Above normal mean summer temperature



Map credit: California Water Watch (cww.water.ca.gov)

DELTA ECOSYSTEM

A healthy Delta ecosystem needs tens of thousands acres of functional, diverse, and interconnected habitat

Delta Plan target: Restore 60,000 – 80,000 acres of natural habitat, by 2050

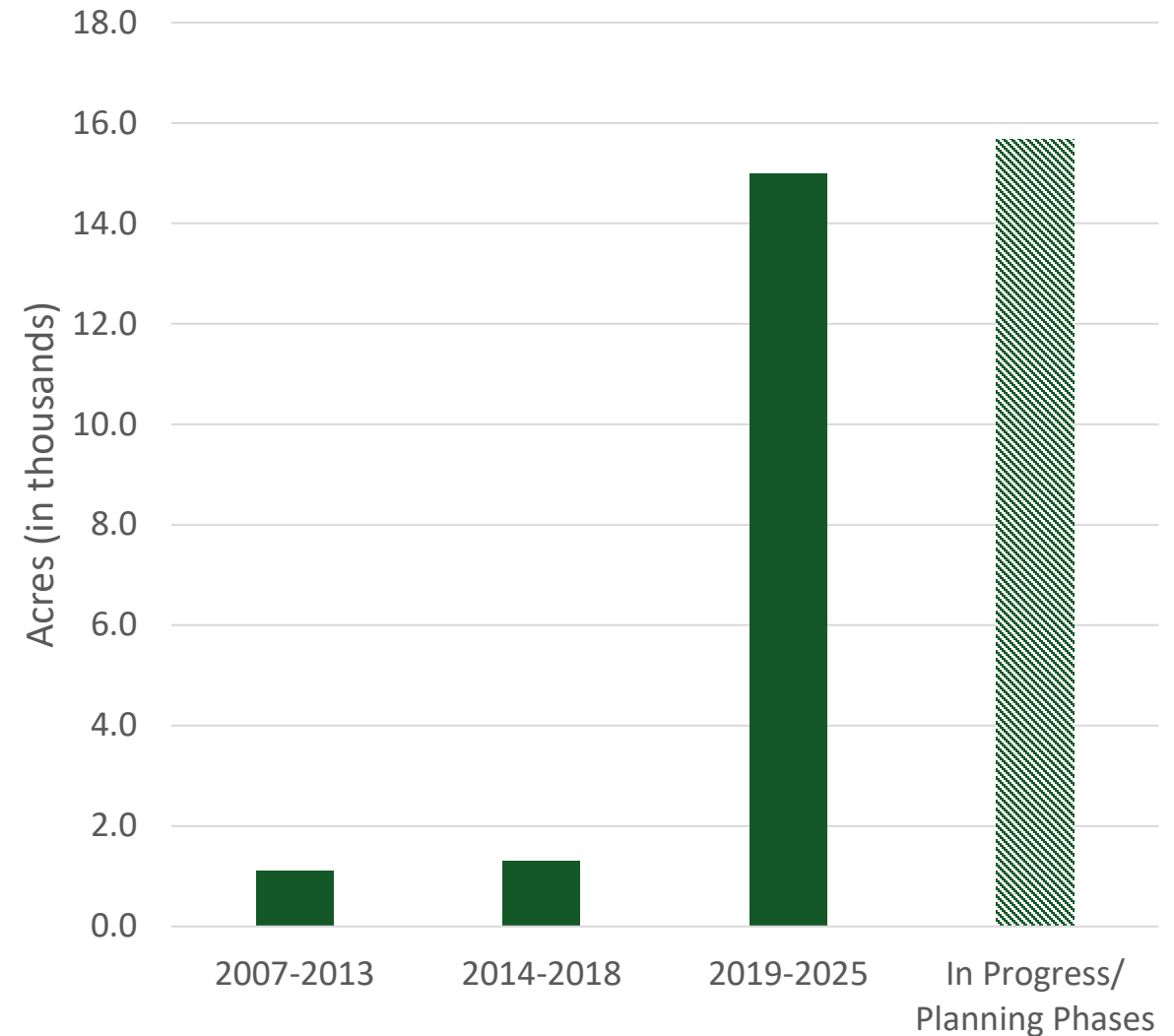
In 2016, natural habitat in Delta and Suisun Marsh covered about 70,000 acres

Ecosystem Type	Target Acres Net Increase	Target Acres Total in 2050
Tidal Wetland	32,500	52,400
Nontidal Wetland	19,000	24,000
Floodplain and Riparian	16,300	30,500
Other Habitat	13,000	18,000

Ecosystem Restoration Projects

- Between 2014-2025, more than 15,000 acres completed
- Additional 16,000 acres in progress
- Projects in north and central Delta and in Suisun Marsh
- Tidal and nontidal wetlands, floodplain and riparian habitat

Restored Acres in the Delta from 2007-2025



Yolo Bypass Floodplain Inundation

Frequent inundation of the Yolo Bypass floodplain restores more natural functional flow patterns and supports native fish

Target: At least 17,000 acres inundates for 14 days in two thirds of years, and for 21 days every other year

Status:

- Yolo Bypass inundated for 20 days in 2024 and 2025
- 'Big Notch' project operational in 2025



Photo Credit: Hannah Chaney

Why Restore Ecosystem Function?

Restoration projects contribute to the overall Delta ecosystem by:

- *Being large scale*
- *Improving connectivity*
- *Restoring ecosystem functions*
- *Supporting native vegetation*
- *Contributing to species recovery*

Baseline: Set at zero in 2025

Target: Funding for Tier 1 and Tier 2 projects increases to 80% of total funding

Status: Since April 2025, three projects in Tier 1 and 2 received \$39,000,000 in funding



Salmon Doubling Goal

Central Valley chinook salmon natural production, fish born and raised without human help, increases for individual runs and in select tributaries

Baseline: Natural production annual average of 497,054 for all Central Valley runs

Target: 990,000 fish by 2065

Current Status: In 2024, 115,125 fish:

- Sacramento River watershed: 11% of target
- San Joaquin River watershed: 34% of target



NONNATIVE INVASIVE SPECIES

Invasive Species

New invasive species are prevented from establishing in the Delta

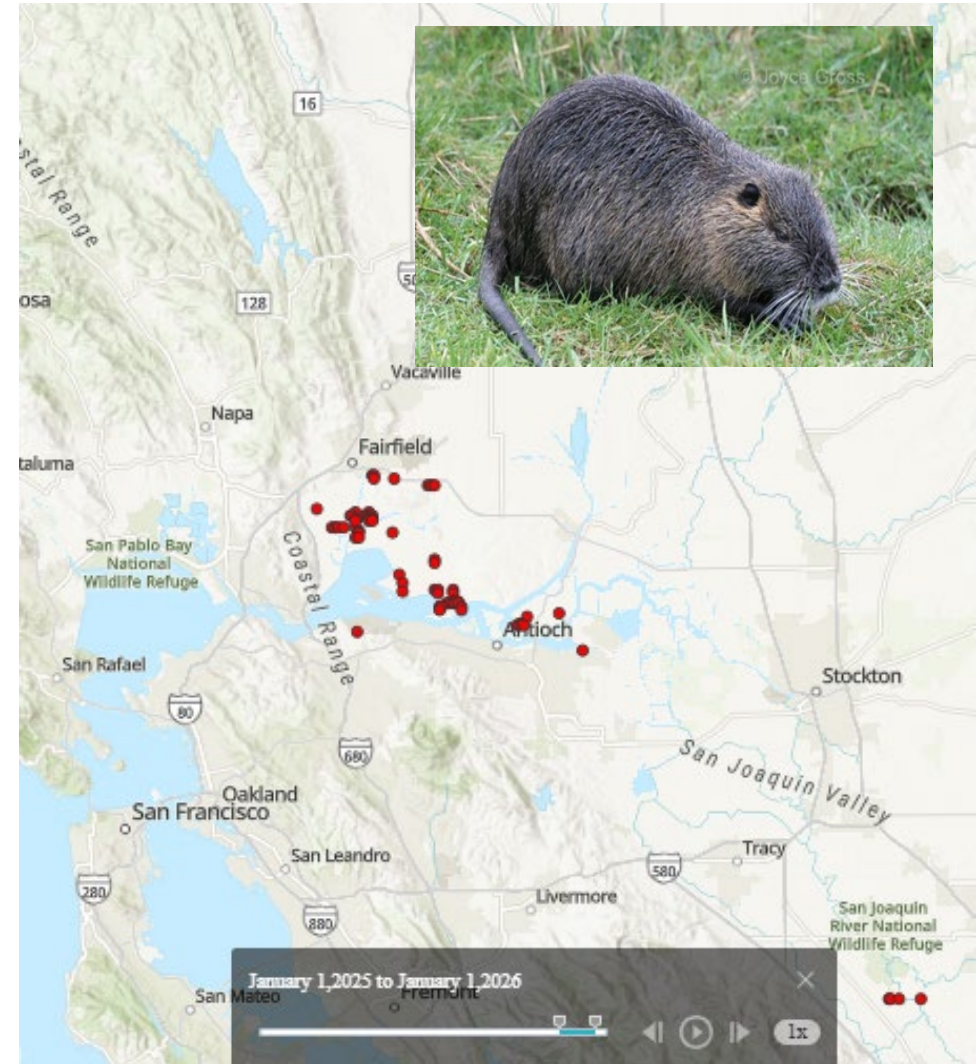
Baseline: Non-native invasive species reported as established in the Delta prior to 2013

Target: Zero new non-native invasive species populations establish



Nutria (*Myocastor coypus*)

- Invasive aquatic mammal found in late 2017
- Risk to agriculture, levees, and native wetland habitats
- Continues to proliferate, especially in Suisun Marsh and western Delta
 - Nutria scat detected in Lookout Slough in November 2025
- Delta counties account for more than half of 2025 total take



CDFW Map of Nutria Take during 2025

Golden Mussel (*Limnoperna fortunei*)

- Invasive freshwater/brackish mollusk found near Stockton in October 2024
- Impacts to water infrastructure, water quality, and native habitats
- Spotted throughout California Aqueduct
- State response:
 - Prevention and outreach
 - Ongoing research
 - Regulations



CDFW Map of Golden Mussel Detections since 2024

Mute Swans (*Cygnus olor*)

- Invasive large waterfowl, wingspan up to 8 feet
- Destructive, aggressive, and territorial
- Delta presence mainly in Solano County
- In 2025, statewide population was about ~12,000, up from ~1,100 in 2022
- AB 764 allows take of invasive mute swans beginning January 1, 2026



DELTA COMMUNITIES AND FLOOD INSURANCE PROGRAM

What is the NFIP CRS program and how do we track it?

The National Flood Insurance Program offers a community rating system. Communities that invest in flood preparedness beyond minimum requirements secure a discount for residents on insurance premiums.

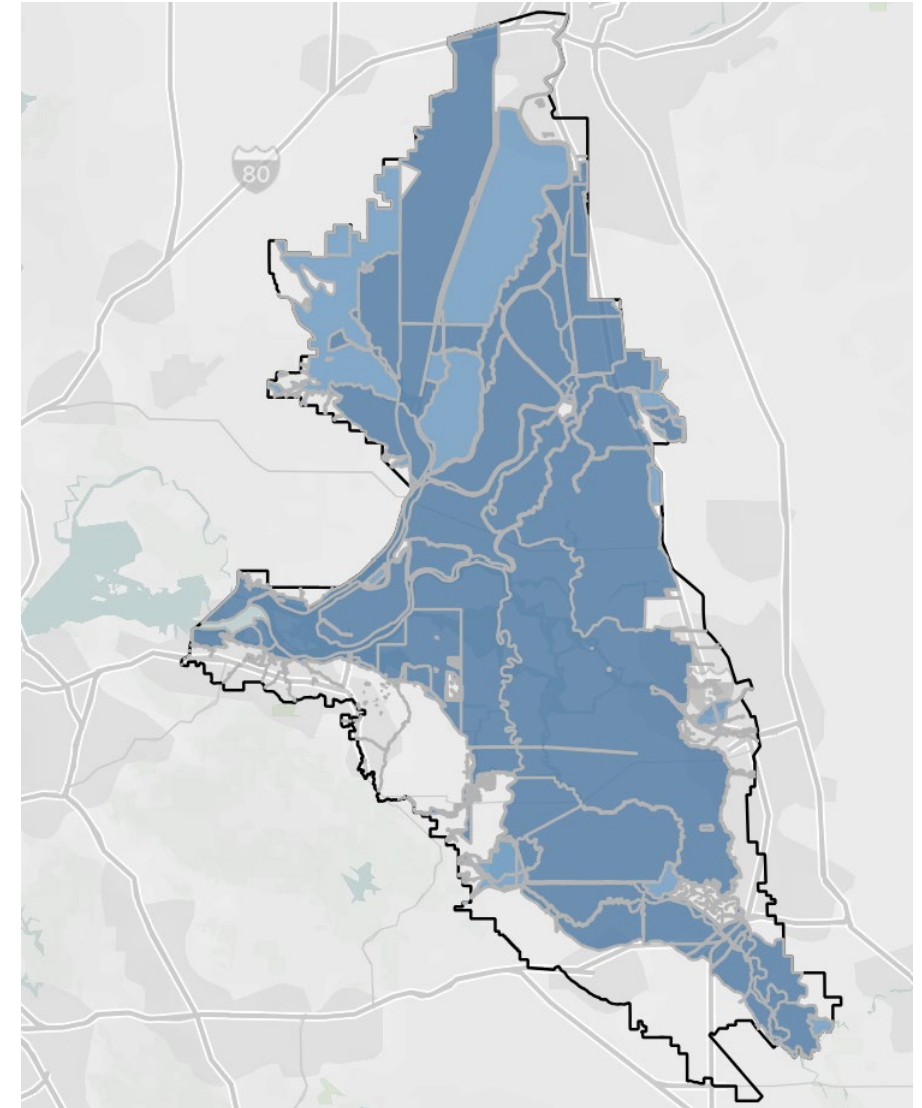
- **Baseline:** Community Rating System credit points as of 2013
- **Target:** One percent increase in Community Rating System credit points by 2025
- **Status:** As of 2025, credit points in Delta Communities have *decreased* by 15% since 2013

Agenda Item: 8, Presentation

Meeting Date: January 22, 2026

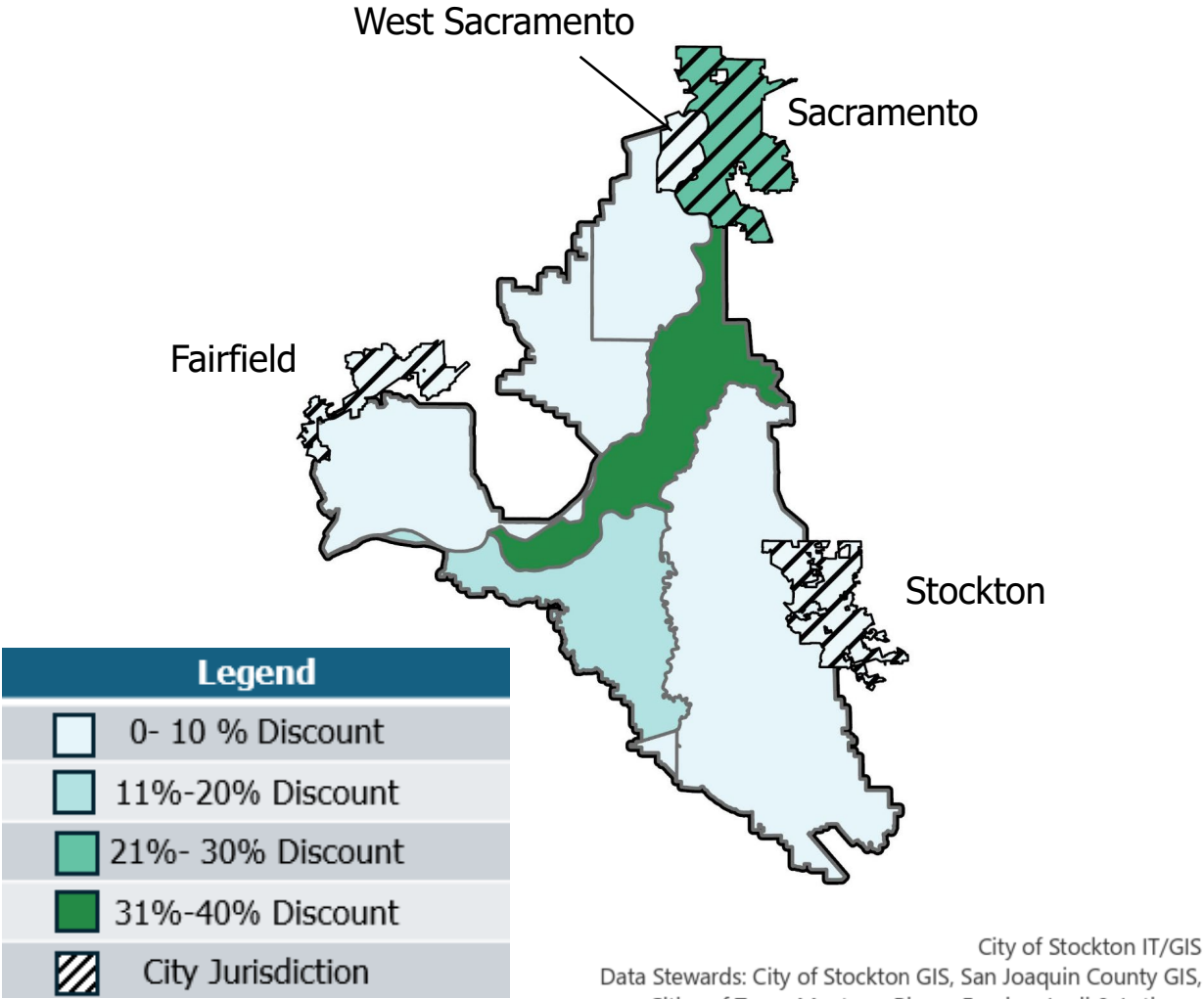
Page: 17 of 23

Special Flood Hazard Areas within the Legal Delta

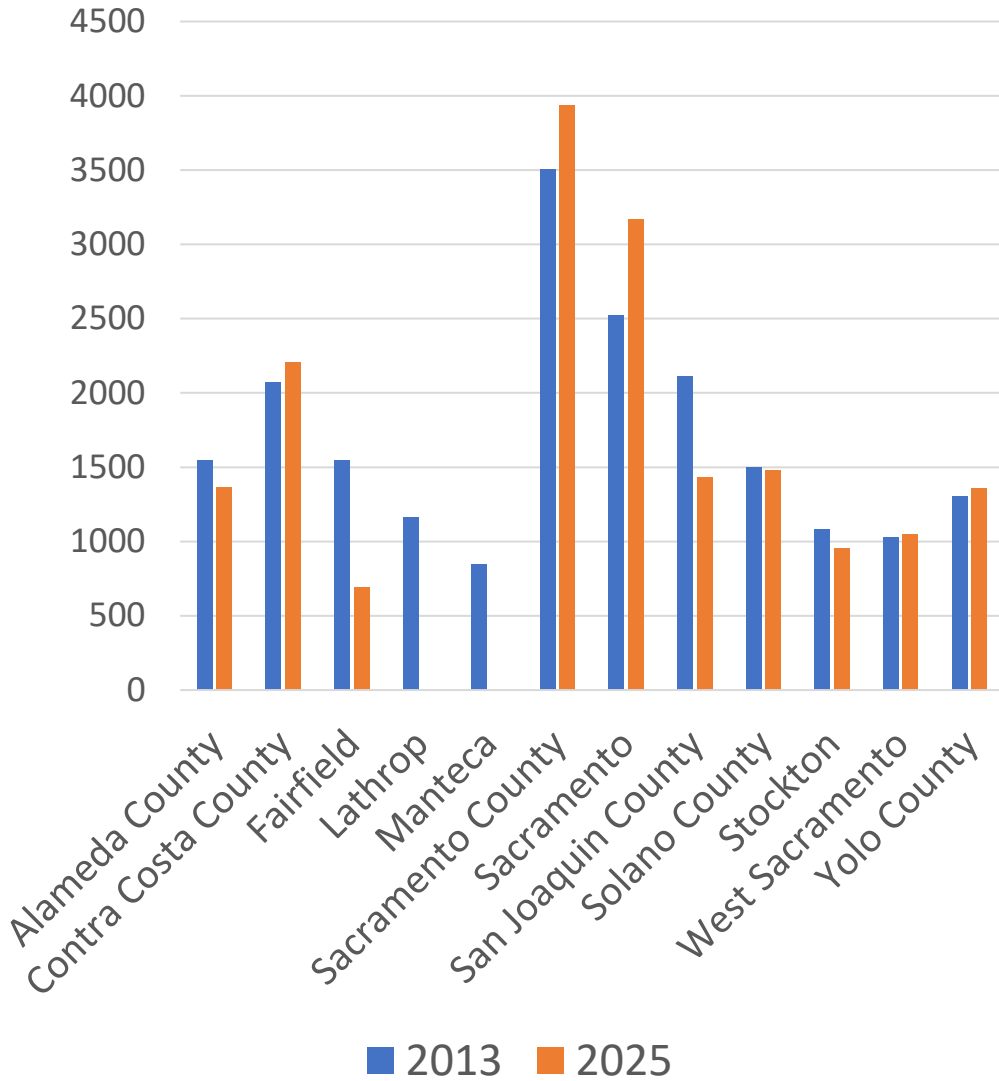


What does the 2025 data tell us?

2025 Discount Rates – Delta Communities



CRS Delta Community Scores 2013-2025



CONCLUSION

2025 Year in Review Summary



Natural habitat
restoration is
increasing



Native species
responses to
restoration are
slow



Controlling
invasive
species
continues to
be challenging



Community
flood program
participation
is decreasing



Urban water
conservation is
meeting
statewide
water use
targets

Key Takeaways



Performance measures provide annual “pulse-check” on Delta Plan progress



Increase funding for ecosystem projects that are large-scale, connected, and restore ecosystem functions



Continue dedicated focus on invasive species control, prevention, and rapid response



Manage water demand by improving conservation and water use efficiency

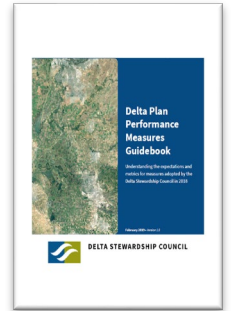
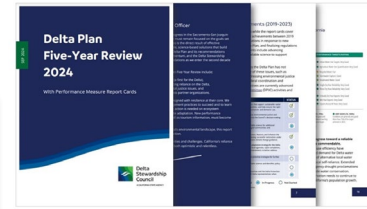
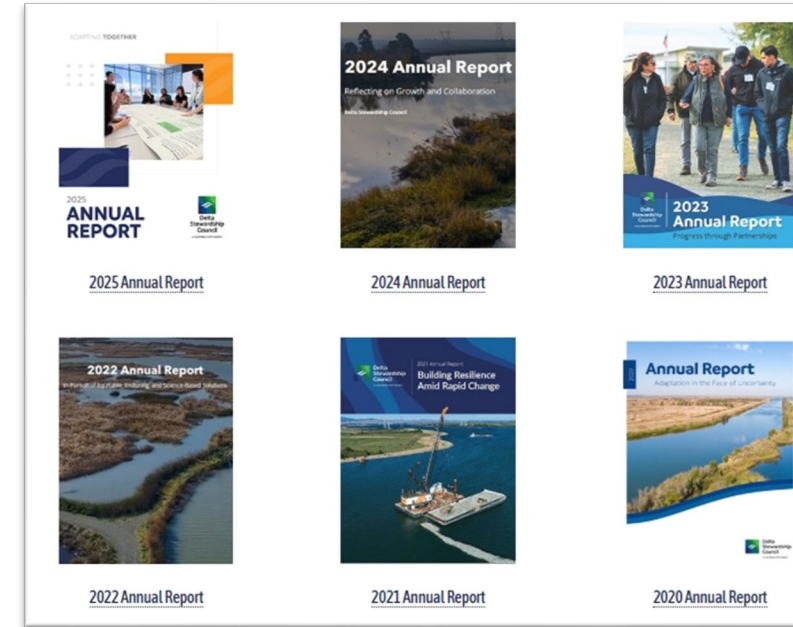


Increase focus, coordination, and investments in underperforming areas

Next Steps

- Engage with agencies and partners
- Feature partner accomplishments
- Enhance dashboard
- Continue annual updates and performance evaluations
- Visualize data and provide access
- Expand and revise metrics
- Incorporate emerging science

Agenda Item: 8, Presentation
Meeting Date: January 22, 2026
Page: 22 of 23



Performance Measure Dashboard



viewperformance.deltacouncil.ca.gov

Thank you

Connect with us



Scan the QR code to
subscribe to our email
announcements



Deltacouncil.ca.gov



@DeltaCouncil



@deltastewardshipcouncil



Delta Stewardship Council



@deltastewardshipcouncil