

JAN 2026

Lead Scientist Report

Agenda Item: 7, Presentation
Meeting Date: January 22, 2026
Page 1 of 8



**Delta
Stewardship
Council**

A CALIFORNIA STATE AGENCY

Fremont Weir & Yolo Bypass



Importance of Yolo Bypass flooding to Bay-Delta food webs

Shruti Khanna et al. 2025. Ecological Applications.

Agenda Item: 7, Presentation
Meeting Date: January 22, 2026
Page 3 of 8



Very collaborative!



**Delta
Stewardship
Council**

A CALIFORNIA STATE AGENCY



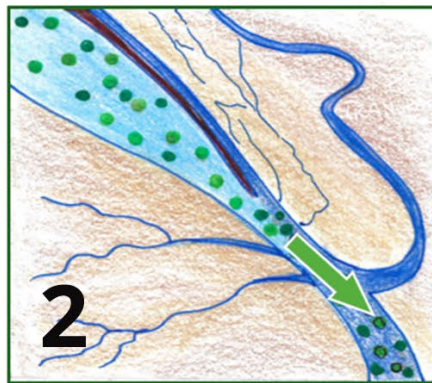
— BUREAU OF —
RECLAMATION



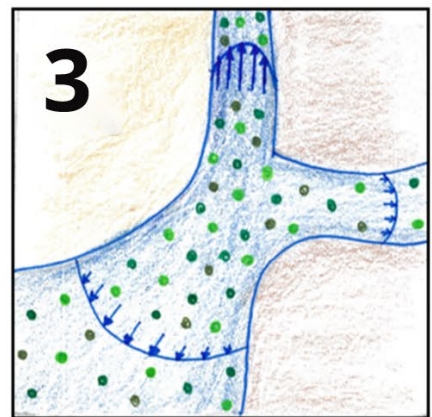
<https://doi.org/10.1002%2Feap.70146>

Conceptual model of phytoplankton export from an inundated floodplain

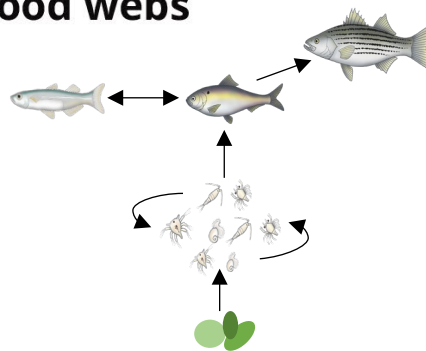
Agenda Item: 7, Presentation
Meeting Date: January 22, 2026
Page 4 of 8



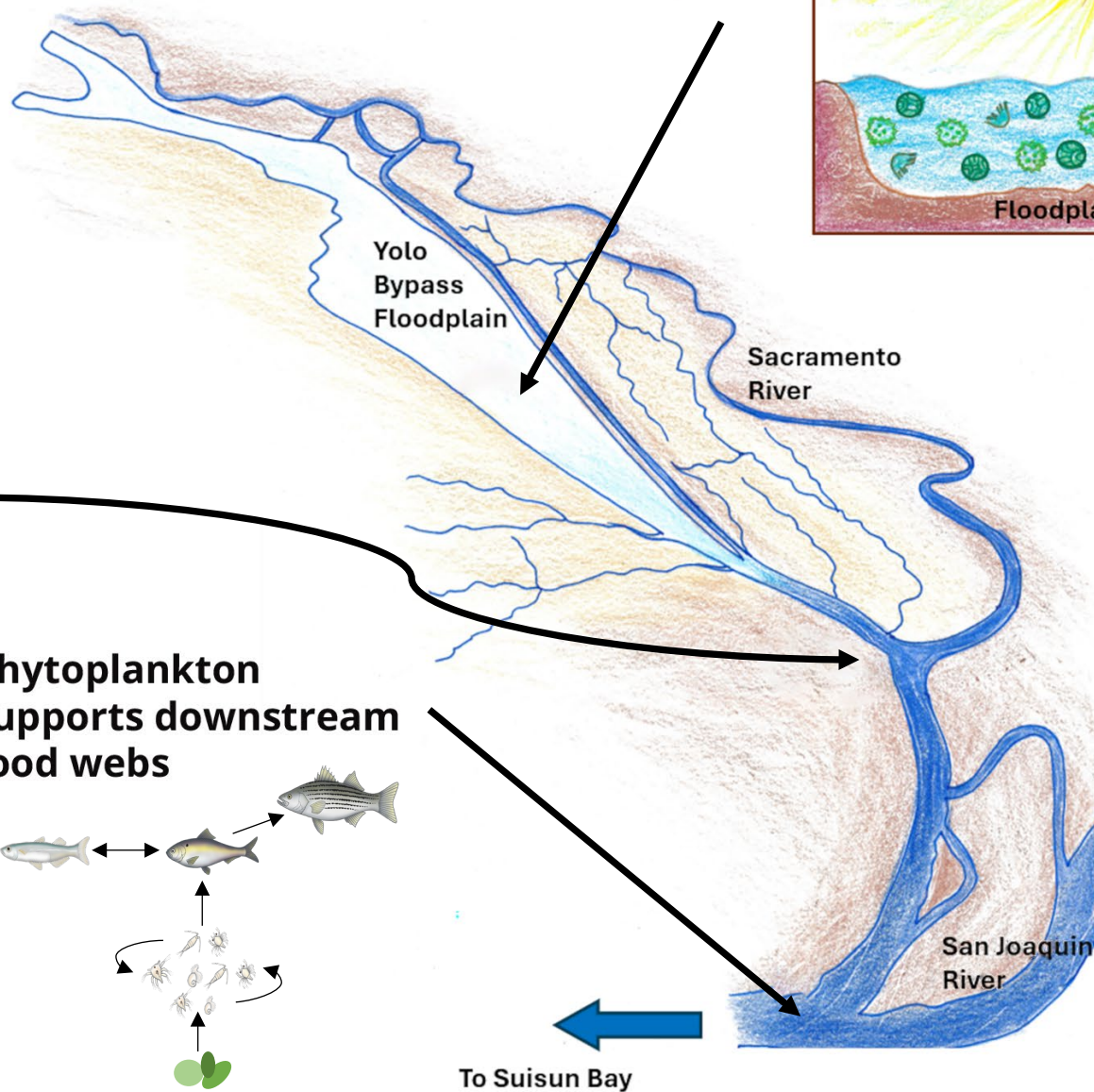
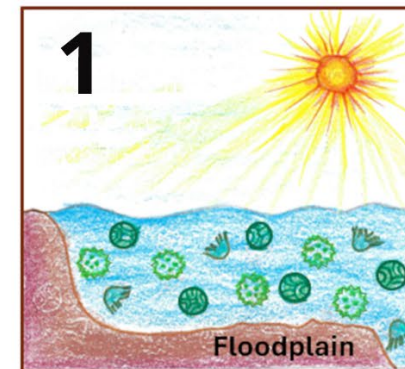
Phytoplankton is flushed downstream



Phytoplankton supports downstream food webs

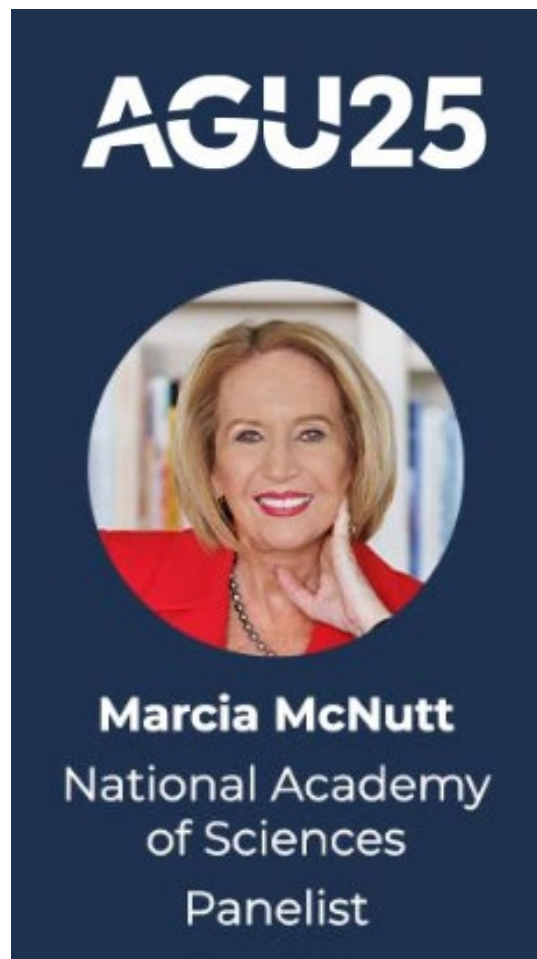


Phytoplankton grows on warm, shallow floodplain

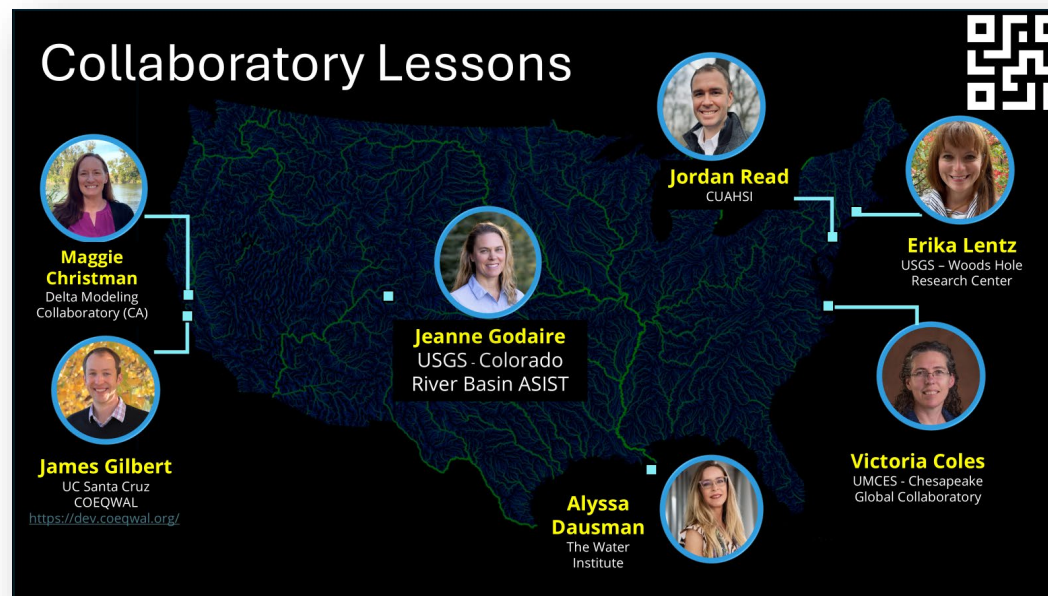


Modified from illustration by
Shruti Khanna in Khanna et
al. 2025.
Food web icons courtesy
Tanya Rogers.

TAKEAWAY #1: There's hope!



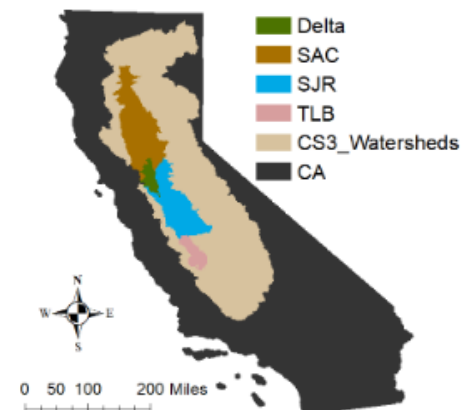
TAKEAWAY #2: Collaboratory—Learning together!



TAKEAWAY #3: Lots of CA and Delta water work!

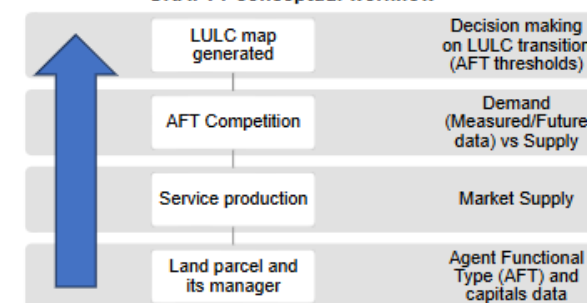


Study Area: Central Valley, California



Methodology:

CRAFTY conceptual workflow

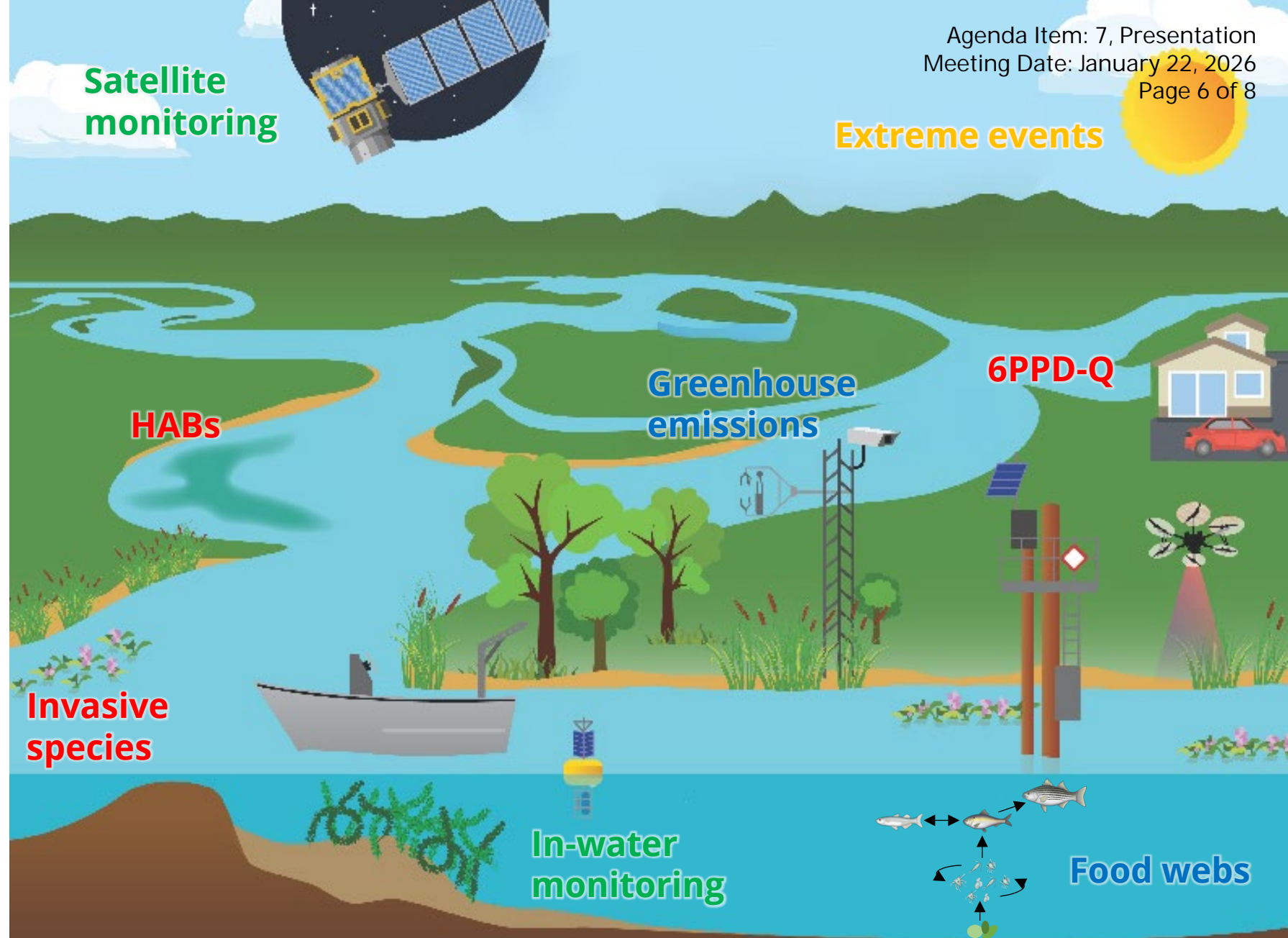


OVERALL: Science impact grows when you bring people in.



2025 LSR topics

- **Satellite data are powerful** for monitoring and decision-making
- Current **Delta stressors** include HABs, contaminants (6PPD-Q), and invasive species
- **Wetland restoration** impacts food webs, carbon cycling, and greenhouse gas emissions
- **Climate & extreme events** overlay everything



Modified from Hestir, E., & Dronova, I. (2023). Remote Sensing of Primary Producers in the Bay-Delta. *San Francisco Estuary and Watershed Science*, 20(4). <https://doi.org/10.15447/sfew.2023v20iss4art5>

2026 – Focusing on Connections

It's not too late! January 30 extended deadline for public comments on the 2026 Draft Delta Science Plan
<https://www.surveymonkey.com/r/RQCPSXF>

Upcoming events

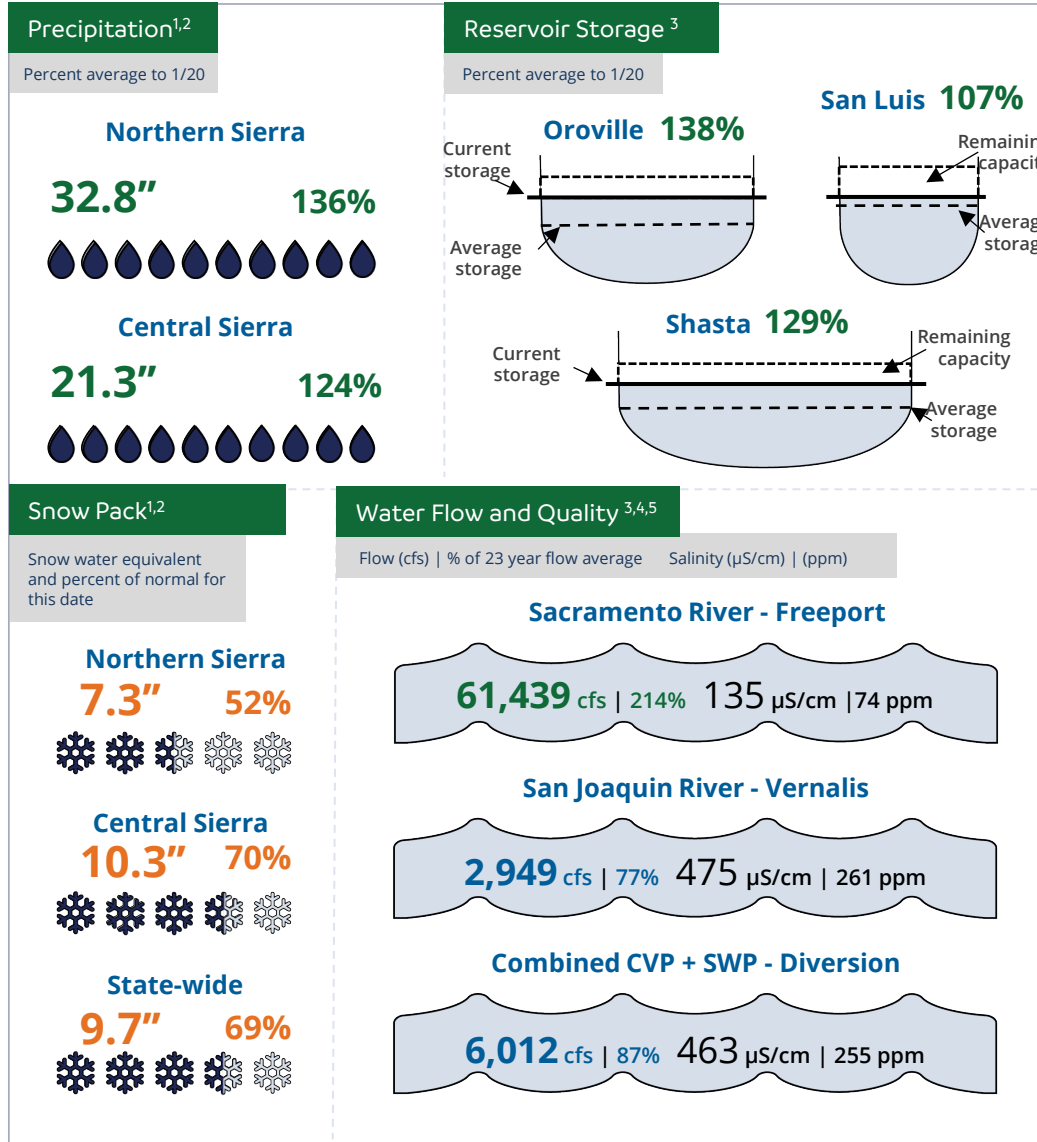
March 5: Accounting for Blue Carbon in the Bay-Delta

<https://marinescience.ucdavis.edu/events/cmsi-and-delta-stewardship-council-symposia>

March 16 - 18: Interagency Ecological Program Annual Workshop

<https://iep.ca.gov/Public-Engagement/Annual-IEP-Workshop>





¹ <https://go.usa.gov/xQsUc> ³ <https://go.usa.gov/xQsUr> ⁵ <https://go.usa.gov/xQsUT>
² <https://go.usa.gov/xQsUa> ⁴ <https://go.usa.gov/xQsU2>

<50% 50-74.9% 75-90% >90%