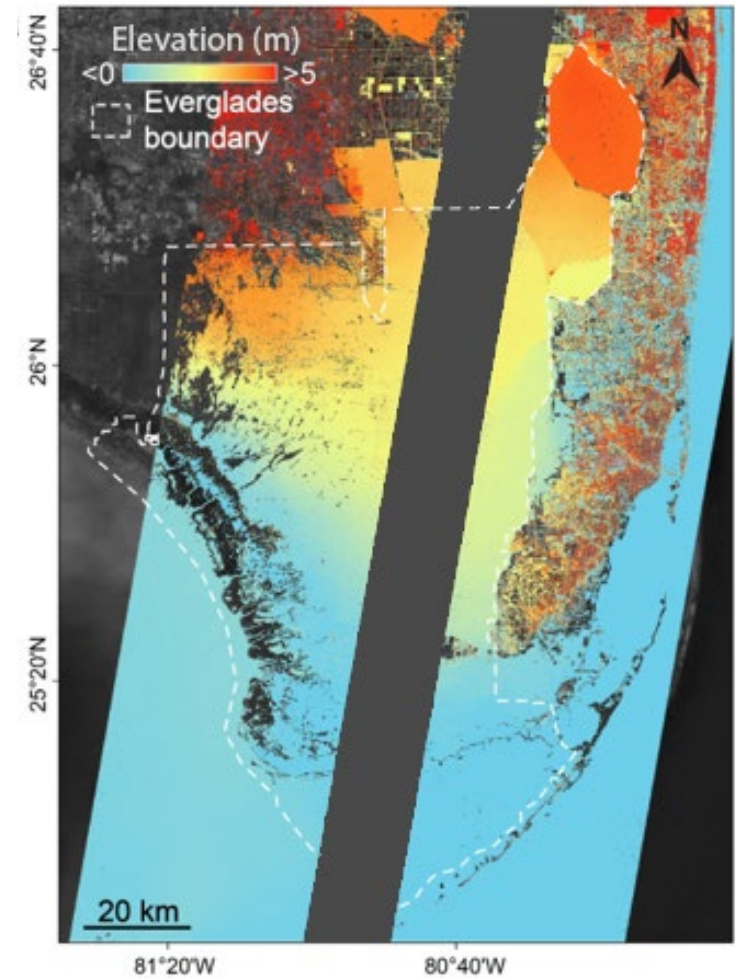
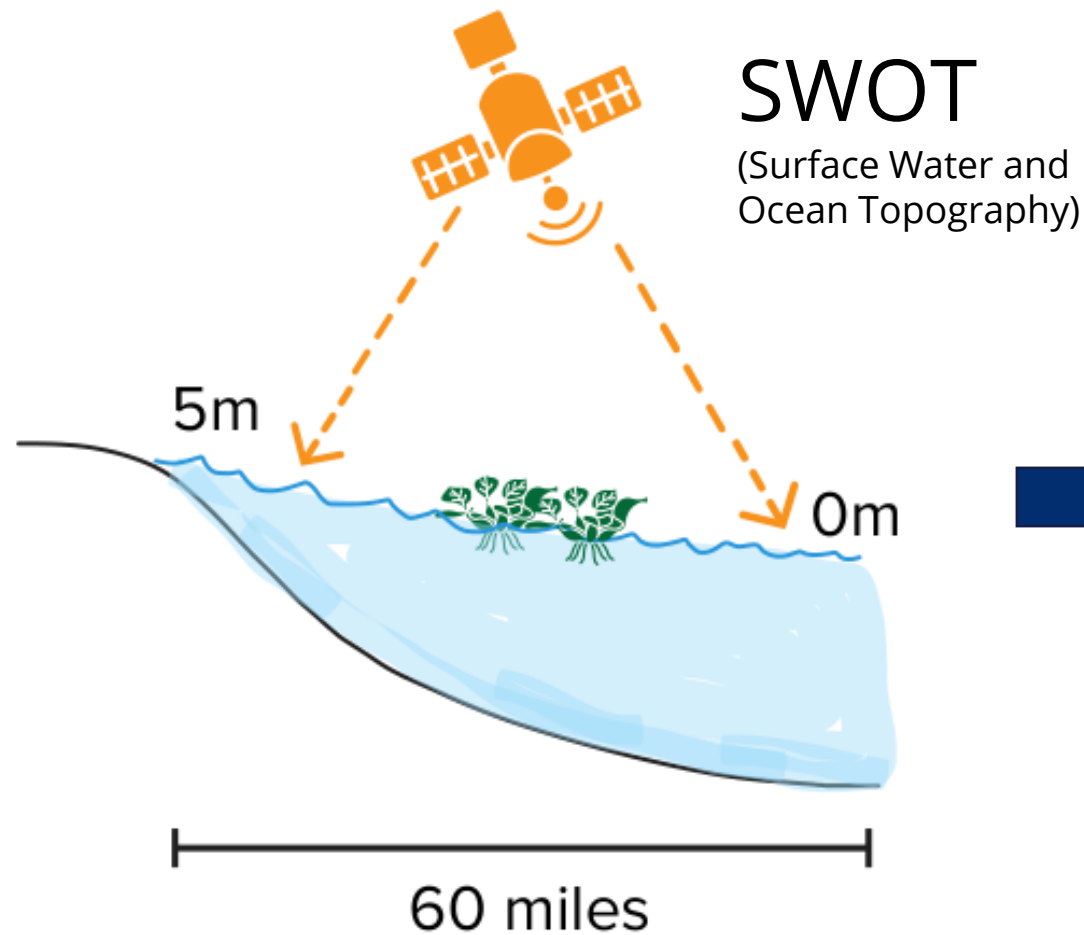


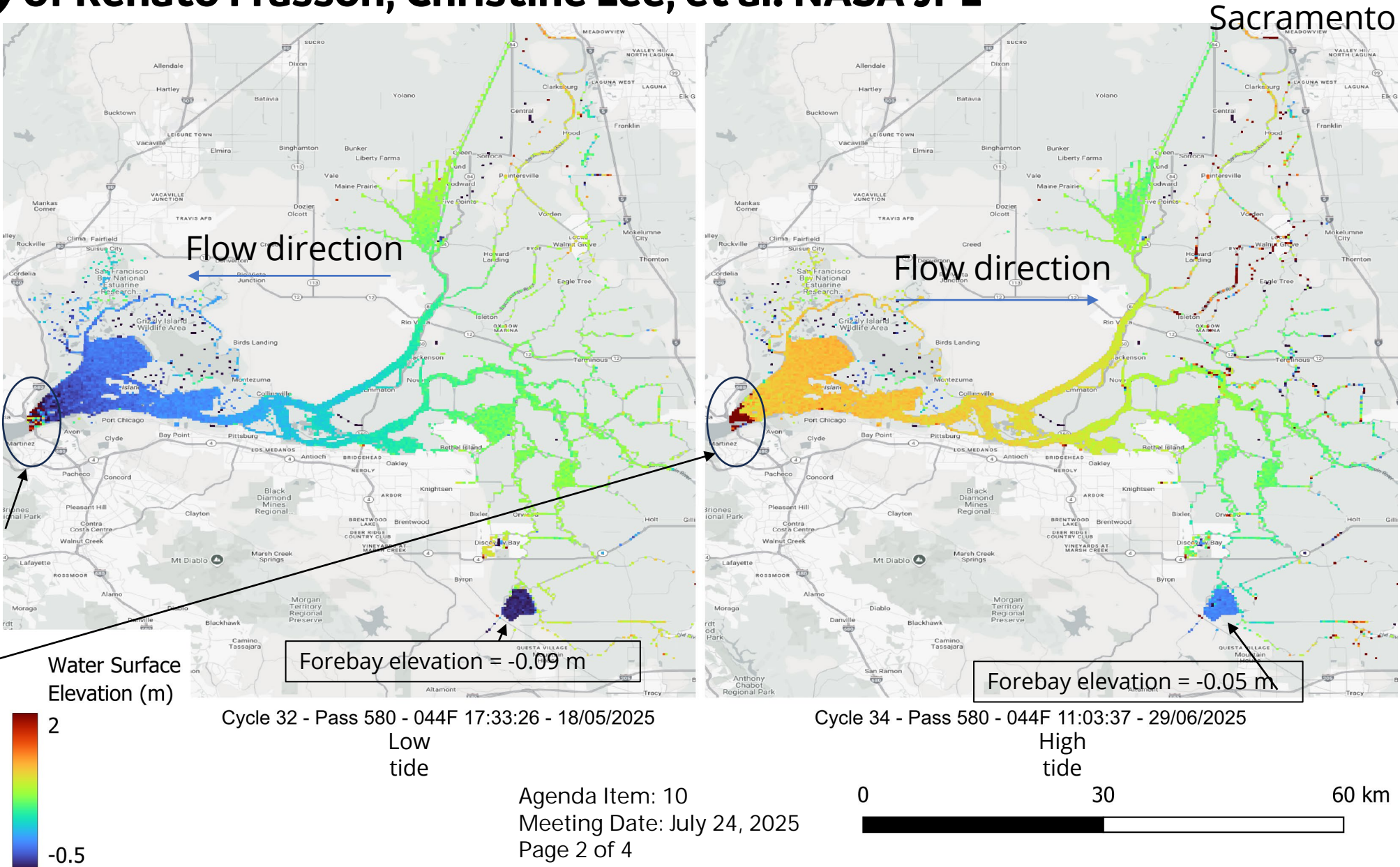
# Using satellite imagery to map wetland water elevations



Kica et al. 2025, *Geophysical Research Letters*  
<https://doi.org/10.1029/2025GL114956>

# Draft SWOT results for SSJ Delta (May 18 & June 29, 2025)

Courtesy of Renato Frasson, Christine Lee, et al. NASA JPL



# Delta Science Program Activities

**New publication:** “Changing Paradigms of Knowledge Production: Interweaving Traditional Knowledge and Predominant Science in the Delta”

**Delta Research Awards** formally announced

## On Your Radar

July - August 2025

- New **Delta topographic data** being collected for land surface with seamless, high quality Digital Elevation Model (DEM)

September 2025

- Three articles slated for release in *San Francisco Estuary & Watershed Science* journal to complete the **2025 edition of the State of Bay-Delta Science**
- Delta Independent Science Board **Climate Symposium** September 16–17, 2025 (at UC Davis)



## Precipitation<sup>1,2</sup>

Percent average to 7/21

### Northern Sierra

**55.1"** **105%**



### Central Sierra

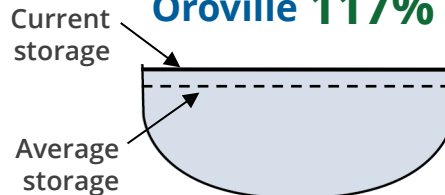
**26.3"** **67%**



## Reservoir Storage<sup>4</sup>

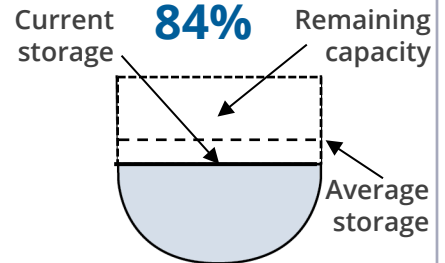
Percent average to 07/21

**Oroville 117%**

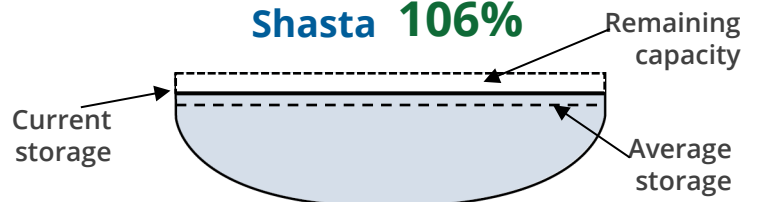


### San Luis

**84%**



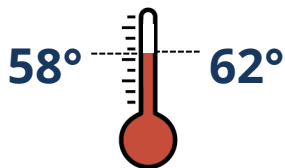
**Shasta 106%**



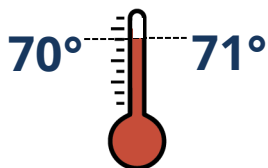
## Water Temperature<sup>3</sup>

In degrees Fahrenheit

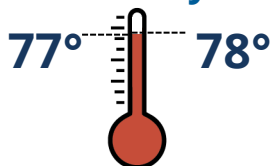
### Clear Creek



### Collinsville



### Clifton Court Forebay



## Water Flow and Quality<sup>4,5,6</sup>

Flow (cfs) | % of 20 year flow average Salinity (μS/cm) | (ppm)

### Sacramento River - Freeport

**23,331** cfs | 150% **117** μS/cm | 64 ppm

### San Joaquin River - Vernalis

**598** cfs | 9% **480** μS/cm | 264 ppm

### Combined CVP + SWP - Diversion

**7,939** cfs | 101% **217** μS/cm | 119 ppm

Average to 07/21

Historical average

<sup>1</sup> <https://go.usa.gov/xQsUc>

<sup>2</sup> <https://go.usa.gov/xQsUa>

<sup>3</sup> <https://go.usa.gov/xURFU>

<sup>4</sup> <https://go.usa.gov/xQsUr>

<sup>5</sup> <https://go.usa.gov/xQsU2>

<sup>6</sup> <https://go.usa.gov/xQsUT>