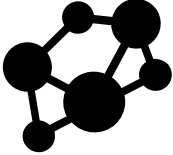


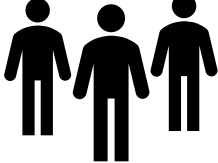

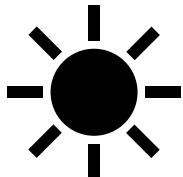


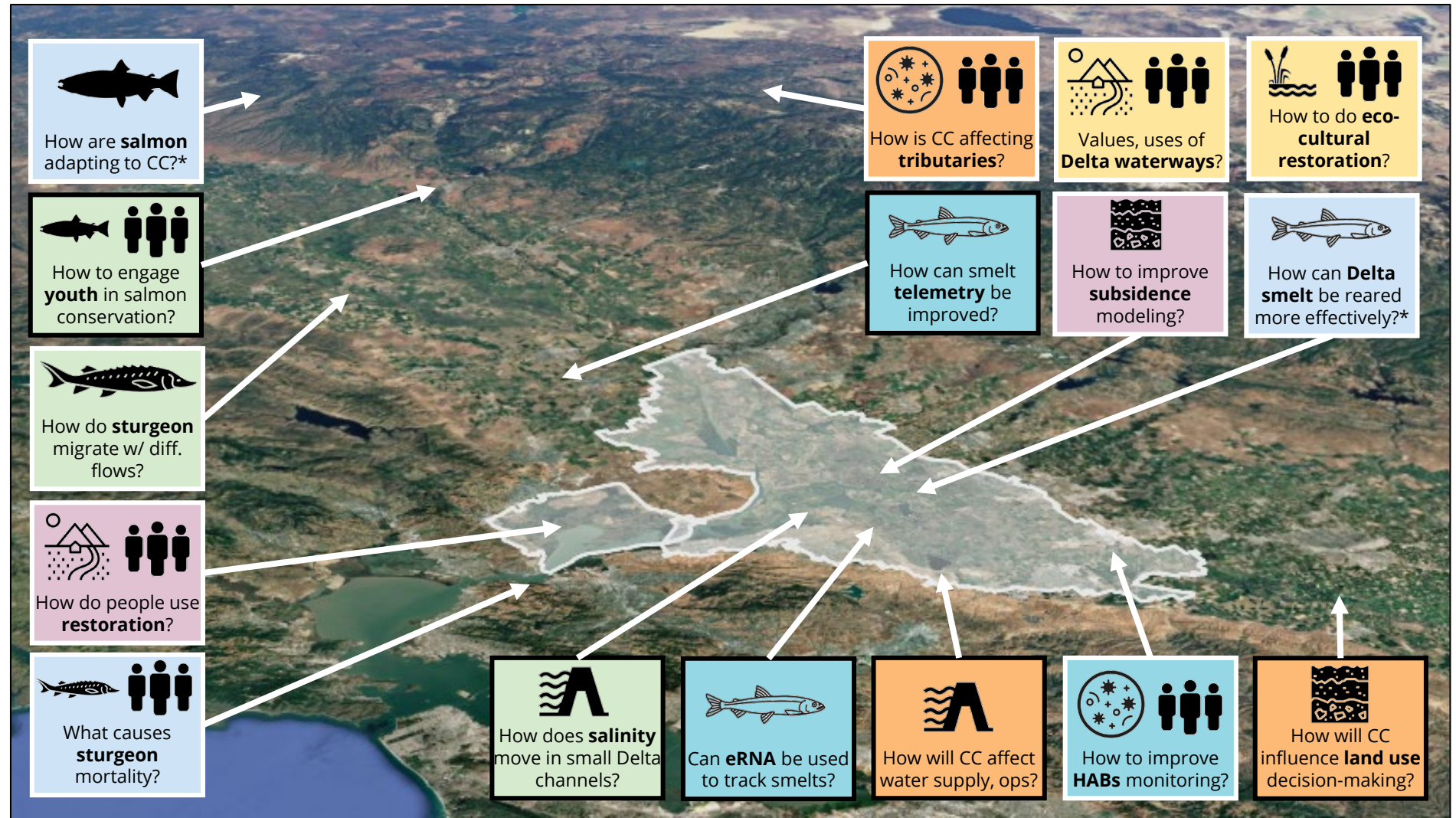
Snapshots of the Awards

	Science Action Agenda Management Needs	What Projects are investigating:
	1: Integrate watershed data for informed management	<ul style="list-style-type: none"> • Climate change impacts in Delta tributaries • Water supply across different climate scenarios • Land use futures in the Central Valley
	2: Advance modeling, monitoring, and response tools	<ul style="list-style-type: none"> • Harmful algal blooms • Delta smelt tracking using eRNA • Longfin smelt tracking using acoustic tags
	3: Approaches for managing Delta as a comprehensive social-ecological system	<ul style="list-style-type: none"> • Restoration values in Suisun Marsh • Subsidence reversal modeling
	4: Understand social dynamics for effective management	<ul style="list-style-type: none"> • Restoration benefits of eco-cultural tule burning • Uses and values of waterways and floodplains • Benefits of Spinning Salmon education program
	5: Enhance approaches to ecosystem health and native species recovery	<ul style="list-style-type: none"> • Using citizen science to assess sturgeon mortality • Alternative rearing methods for Delta smelt • Life histories of spring-run Chinook salmon
	6: Address climate uncertainties and adaptation strategies	<ul style="list-style-type: none"> • Different flow scenarios on sturgeon • Salinity intrusion in small channels

Snapshots of the Awards

Science Action Agenda MANAGEMENT NEEDS

1. Improve large-scale research and watershed data integration
2. Advance modeling, monitoring, and response tools
3. Approaches for managing Delta as a social-ecological system
4. Understand social dynamics for effective management
5. Enhance approaches to ecosystem health and native species recovery
6. Address climate uncertainties and adaptation strategies



*Funded by State Water Contractors