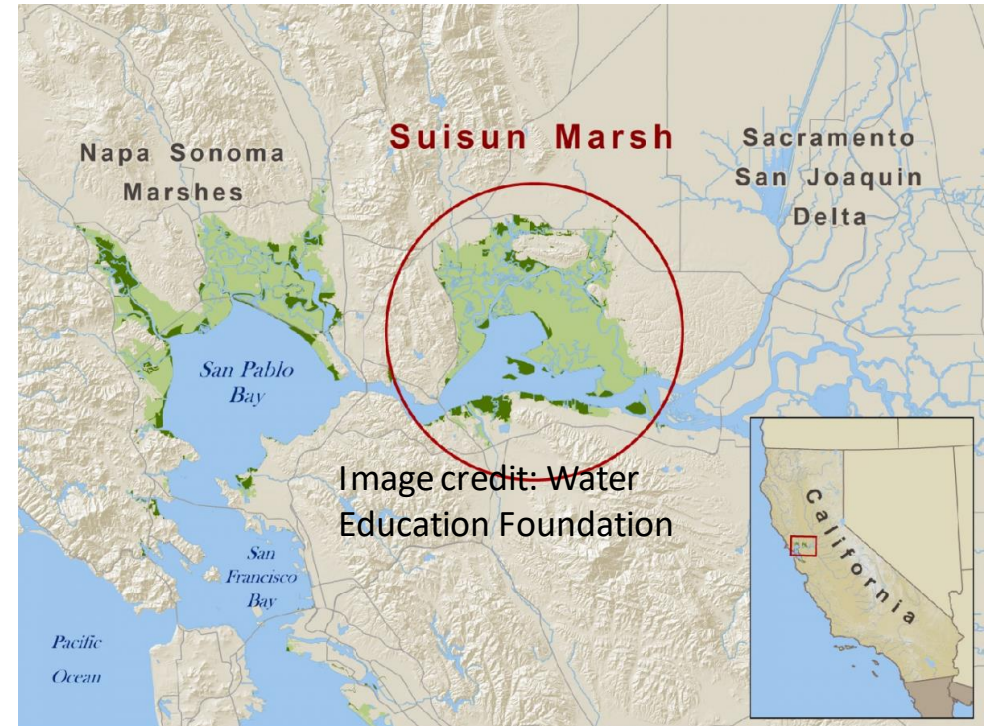
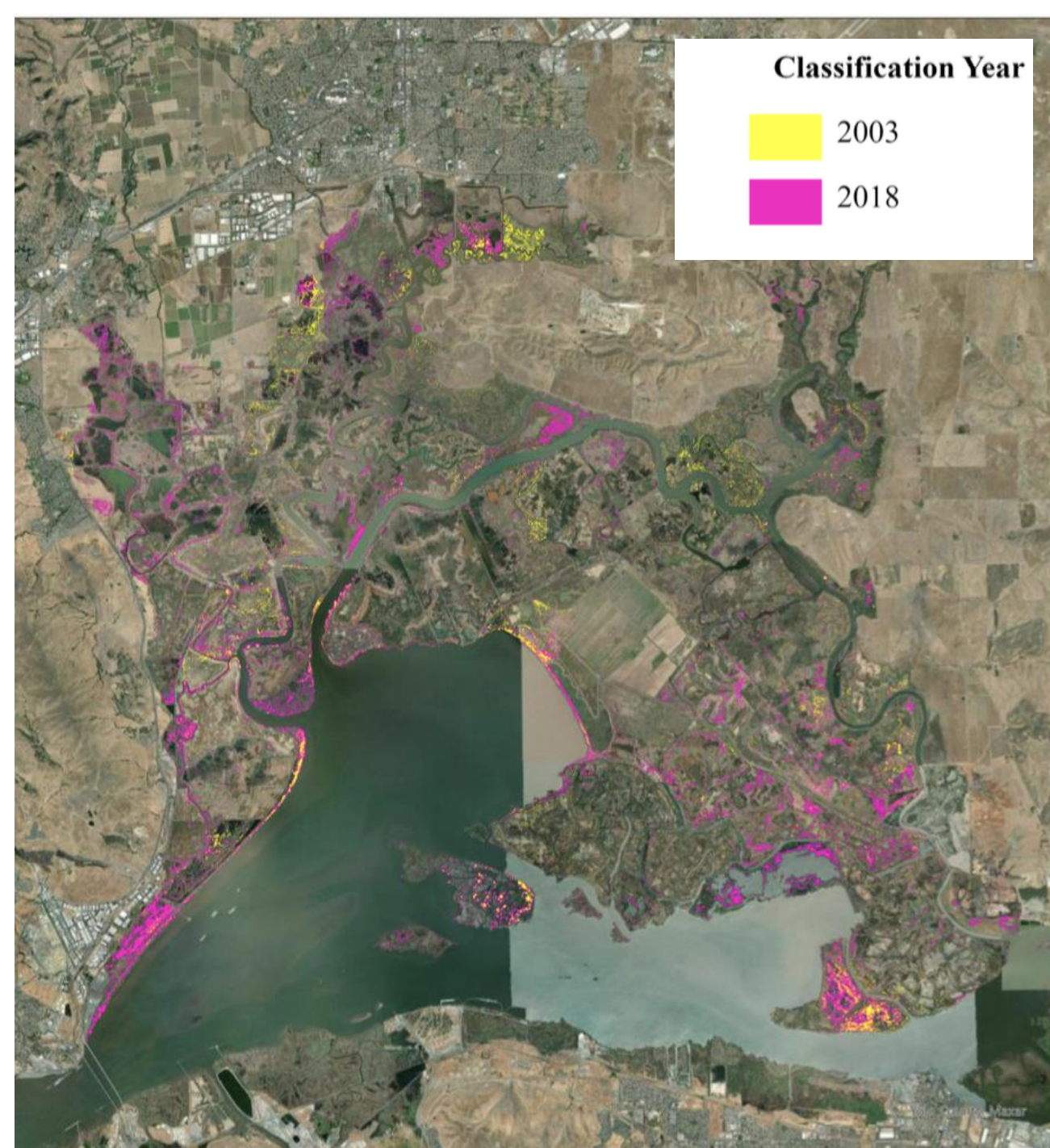


Invasive vegetation mapping from publicly available data shows extensive spread of *Phragmites australis* in Suisun Marsh

(Left) Result of a classification model showing the expansion of *Phragmites australis* in Suisun Marsh, upper San Francisco estuary, from the first classification year of 2003 (yellow) to the most recent peak in 2018 (pink).



Hagani JS, Takekawa JY, Chappell SC, Tanner RL, Ernst AR and Kettenring KM (2023) A remote sensing approach to assess the historical invasion of *Phragmites australis* in a brackish coastal marsh. *Front. Ecol. Evol.* 11:1171245. doi: 10.3389/fevo.2023.1171245