

November 17, 2020

## Precipitation<sup>1,2</sup>

### Northern Sierra

**1.1"**



Percent average to: 11/17

**17%**

### Central Sierra

**0.9"**



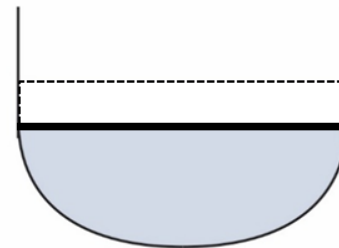
**19%**

Percent of average to: 11/17

## Reservoir Storage<sup>4</sup>

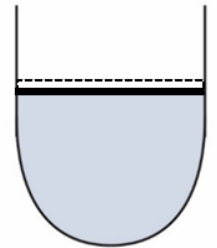
### Oroville

**65%**



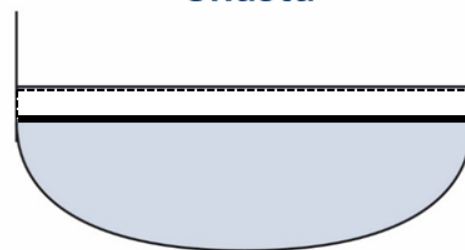
### San Luis

**79%**



### Shasta

**76%**



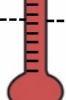
Average storage

## Water Temperature<sup>3</sup>

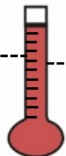
In degrees Fahrenheit

Average to: 11/17

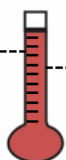
Historical average:

**54°**  **53°**

### Clear Creek

**63°**  **59°**

### Collinsville

**75°**  **59°**

### Clifton Court Forebay

## Water Flow and Quality<sup>4,5,6</sup>

Flow (cfs) | % of 20 yr flow average

Salinity (µS/cm) | (ppm)

### Sacramento River @Freeport

**7,722** cfs | **64%**      **152** µS/cm | 78 – 116.7 ppm

### San Joaquin River @Vernalis

**1417** cfs | **78%**      **528** µS/cm | 270 - 405 ppm

### Combined CVP+SWP Diversion

**2,239** cfs | **31%**      **511** µS/cm | 261 - 392 ppm

<sup>1</sup> <https://go.usa.gov/xQsUc> <sup>3</sup> <https://go.usa.gov/xURFU> <sup>5</sup> <https://go.usa.gov/xQsU2>

<sup>2</sup> <https://go.usa.gov/xQsUa> <sup>4</sup> <https://go.usa.gov/xQsUr> <sup>6</sup> <https://go.usa.gov/xQsUT>