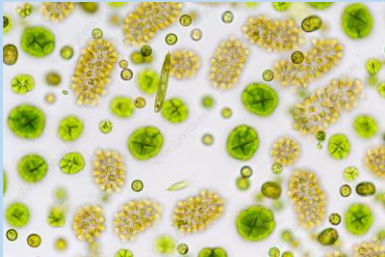




# Decomposing plant matter consumed by estuarine zooplankton can augment survival.

## DIET

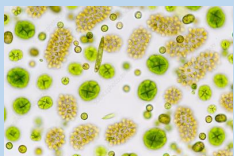
Phytoplankton only



Plant matter only



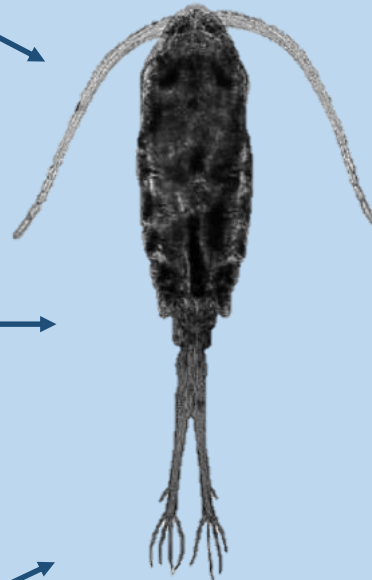
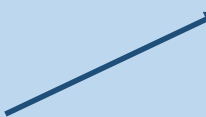
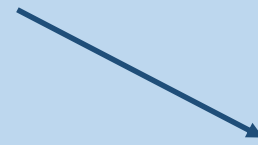
Combined



+



## MAX SURVIVAL



~ 15 days

~ 5 days

~ 35 days

## So what?

Zooplankton and invertebrates form the basis of estuarine food webs. In systems where there is little phytoplankton-based food sources for these organisms, decomposing plant matter can also support populations. This has implications for future wetland restoration efforts.

Harfmann, J.; Kurobe, T.; Bergamaschi, B.; Teh S.; and Hernes, P. Plant detritus is selectively consumed by estuarine copepods and can augment their survival. *Scientific Reports (Nature)*. June 2019.