

# **PRELIMINARY DRAFT**

## **APPENDIX 8A. Physical Expansion of the Channel Width Evaluation Areas**

### **Delta Plan Amendments**

**November 2019**

**For further assistance interpreting the content of this document, please  
contact Delta Stewardship Council staff.**

**[accessibility@deltacouncil.ca.gov](mailto:accessibility@deltacouncil.ca.gov)**

**Phone: 916-445-5511**

*This page left blank intentionally.*

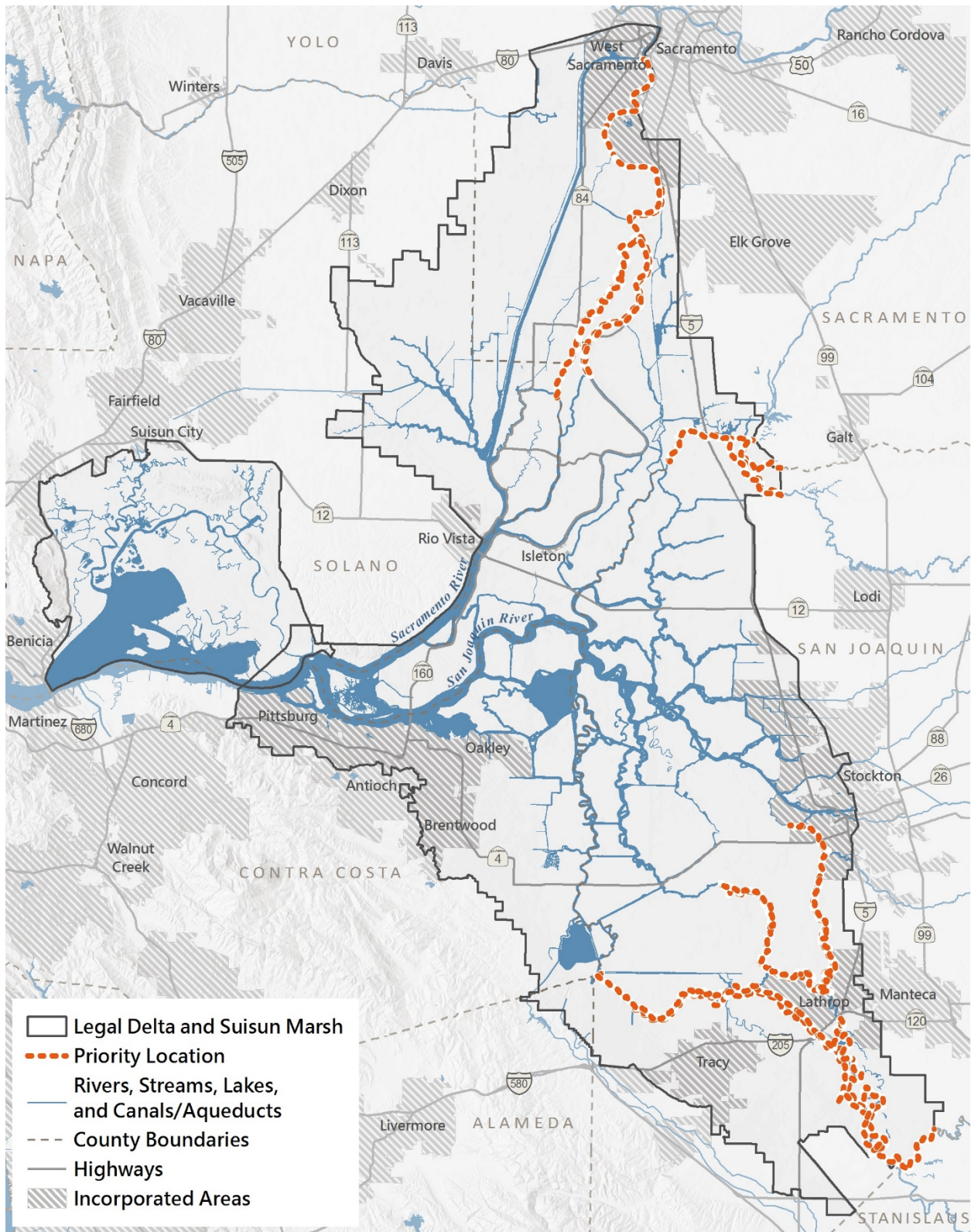


Figure 1. Priority Locations to Evaluate Physical Expansion of Floodplains

## Figure 1. Priority Locations to Evaluate Physical Expansion of Floodplains (contd.)

Figure 1 is a map that identifies the Priority Locations to Evaluate Physical Expansion of Floodplains within the Legal Delta and Suisun Marsh, corresponding to the requirements of Ecosystem Restoration Policy 4 (ER P4). The map shows an outline of the Legal Delta and Suisun Marsh in black. The priority areas are shown within the Legal Delta in orange dotted lines. The map shows unlabeled rivers, streams, lakes, and canals/aqueducts within the Legal Delta and Suisun Marsh colored in a solid blue. County boundaries are depicted in gray dotted lines. Major highways are depicted in gray solid lines, labeled by highway number. Incorporated areas are shown in gray hatching.

The priority areas are:

- the Sacramento River between the Deepwater Ship Channel and Steamboat Slough, including urban levees in West Sacramento and Sacramento;
- Elk Slough;
- Sutter Slough, from Miner Slough to Elk Slough;
- the Cosumnes River and the Mokelumne River, from the boundary of the Legal Delta to the confluence with Snodgrass Slough;
- the San Joaquin River from the Stanislaus River confluence to Rough and Ready Island, including urban levees in Stockton and levees that run through Lathrop;
- the portion of the Stanislaus River that is within the boundary of the Legal Delta;
- Middle River, from the Old River confluence to the midpoint between Howard Road and Tracy Boulevard;
- Old River, from the San Joaquin River confluence to Hammer Island, including levees that run through Lathrop; and
- Paradise Cut.

Please contact the Delta Stewardship Council with any questions regarding this figure.

---