



# Central Valley Project Improvement Act

Delta Plan Interagency Implementation Committee

July 13, 2020

David Mooney – U.S. Bureau of Reclamation

Donald Ratcliff – U.S. Fish and Wildlife Service

# CVPIA Overview

- Water Contracting
- **Fish Resource Area**
- Refuge Water Supply
- Independent Programs
  - Habitat Restoration Program
  - Modeling Program
  - San Joaquin River Restoration
  - Trinity River Restoration
- CVP Restoration Fund



# Central Valley Fish Resource Area



- 28 Watersheds/Areas with Fish Targets
- 8 Active Fish Provisions
  - Anadromous Fish Restoration
  - Dedicated Yield and Operations
  - In-stream Flow Acquisition
  - Tracy Fish Facility Improvements
  - Clear Creek Restoration
  - Gravel for Spawning and Rearing
  - Comprehensive Assessment and Monitoring
  - Anadromous Fish Screen
- 6 Fish Provisions at or near Completion

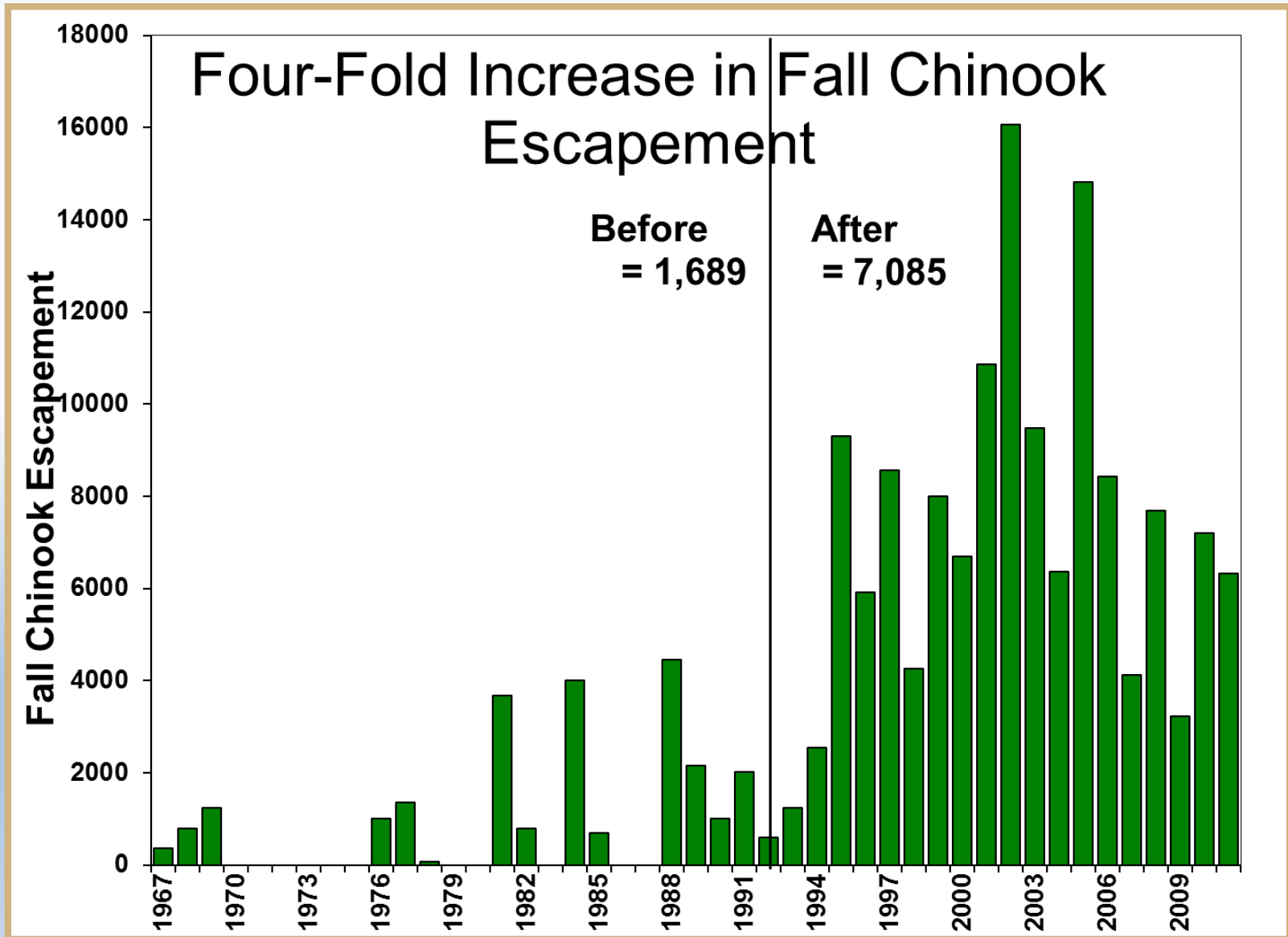
# Final Restoration Plan

- Plan developed to achieve doubling of anadromous fish production
- Natural Production: fish produced to adulthood without direct human intervention in the spawning, rearing, or migration processes
- Draft in 1997, final in 2001
- Programs are identified as tools
- Outlines principles & approach
- Limiting Factors are articulated as Actions and Evaluations in FRP
- 289 actions and evaluations throughout the CV
  - 172 Actions and 117 Evaluations

# Major Fisheries Accomplishments

- Shasta Dam Temperature Control Device
- Red Bluff Diversion Screening and Passage
- Contra Costa Fish Screen
- Tracy Fish Collection Facility
- Habitat Restoration on CVP Streams
  - Instream Flow
  - Floodplain and In-channel Rearing
  - Gravel Augmentation
- Passage and Screens on Central Valley Facilities
- Habitat Restoration on Central Valley Streams
- Juvenile and Adult Monitoring

# Major Accomplishments – Clear Creek



# Major Accomplishments – Butte Creek



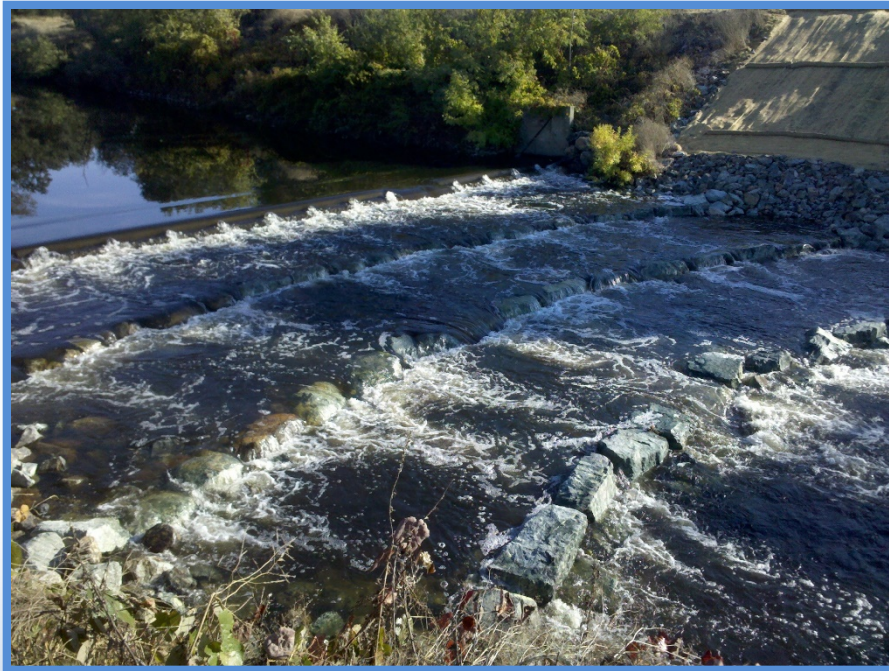


# Major Accomplishments – Habitat





# Major Accomplishments – Fish Passage



# Current Direction

- Formal Adaptive Resource Management methodology and Decision Support Models (DSMs)
- Collaborative Science Integration Team (SIT), open to all interested parties, to develop and maintain DSMs
- Quantitative hypotheses with testable hypotheses and measurable outcomes.

# CVPIA and DPIIC

- The Delta has been consistently considered a high priority by CVPIA from the beginning
- CVPIA managers and staff worked closely with the CALFED Bay-Delta Program and often implemented projects and other efforts for both programs
- Ability to adequately incorporate the Delta in current CVPIA DSMs are limited
- DPIIC pilot SDM efforts and CSAMP Delta Smelt SDM may help inform Delta actions.
- Partnering with the Delta Science Program's proposal solicitation process helps address information gaps.



# Thank You and Questions

