

**DRAFT**

**APPENDIX 8A. Priority Locations to  
Evaluate Physical Expansion of Channel  
Width**

**Delta Plan Amendments**

**May 2020**

For assistance interpreting the content of this document, please contact  
Delta Stewardship Council staff.

[accessibility@deltacouncil.ca.gov](mailto:accessibility@deltacouncil.ca.gov)

Phone: 916-445-5511

*This page left blank intentionally.*

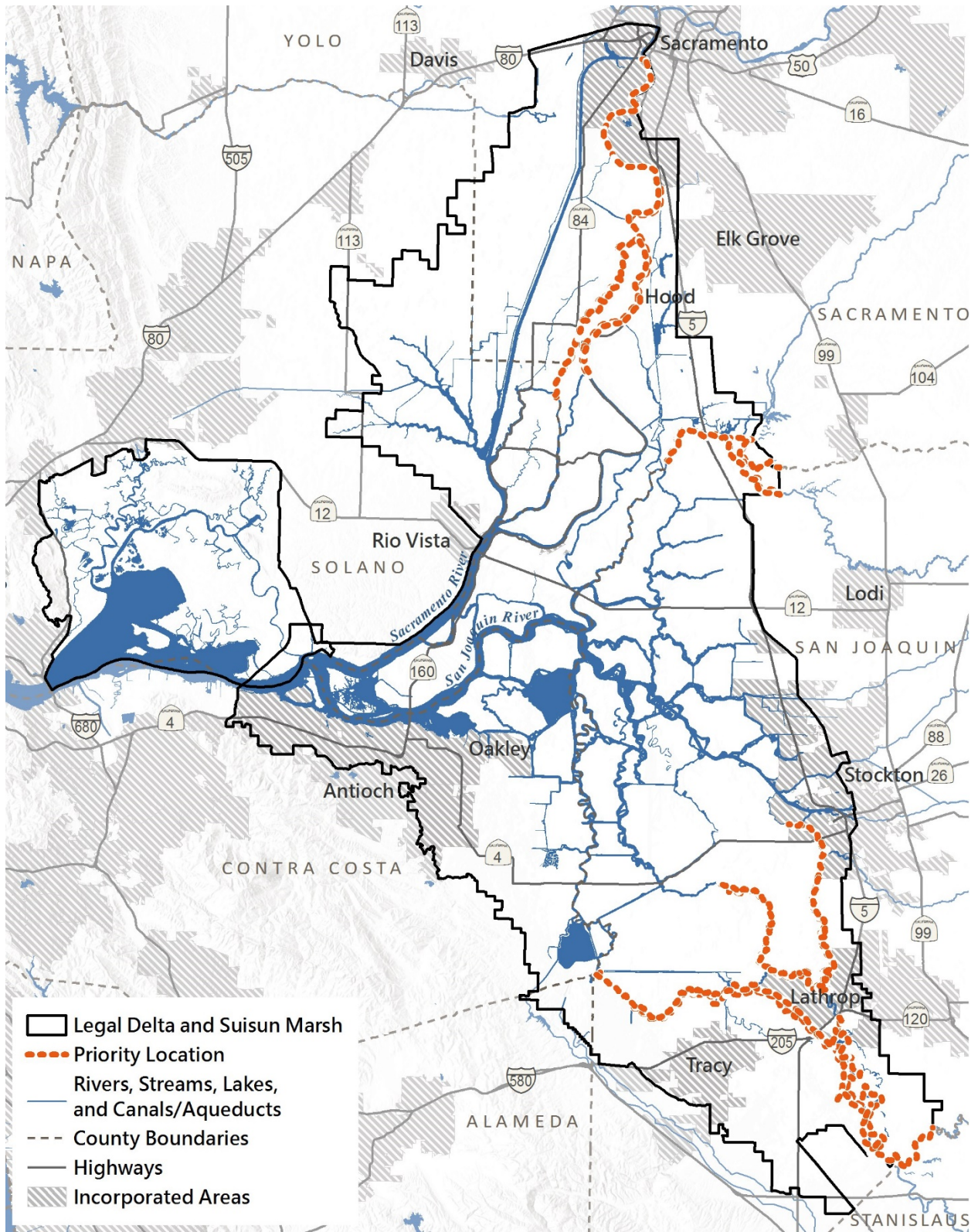


Figure 1. Priority Locations to Evaluate Physical Expansion of Floodplains

## Figure 1. Priority Locations to Evaluate Physical Expansion of Floodplains (contd.)

Figure 1 is a map that identifies the Priority Locations to Evaluate Physical Expansion of Floodplains within the Delta, corresponding to the requirements of Ecosystem Restoration Policy 4 (ER P4). Priority locations are shown along select waterways in upstream portions of the Delta. The priority locations are:

- the Sacramento River between the Deepwater Ship Channel and Steamboat Slough, including urban levees in West Sacramento and Sacramento;
- Elk Slough;
- Sutter Slough, from Miner Slough to Elk Slough;
- the Cosumnes River and the Mokelumne River, from the boundary of the Delta to the confluence with Snodgrass Slough;
- the San Joaquin River from the Stanislaus River confluence to Rough and Ready Island, including urban levees in Stockton and levees that run through Lathrop;
- the portion of the Stanislaus River that is within the boundary of the Delta;
- Middle River, from the Old River confluence to the midpoint between Howard Road and Tracy Boulevard;
- Old River, from the San Joaquin River confluence to Hammer Island, including levees that run through Lathrop; and
- Paradise Cut.

Alternative formats of this map are available upon request.

---