

October 2022

# Reducing Reliance on the Delta Through Improved Regional Water Self-Reliance



**Delta  
Stewardship  
Council**

A CALIFORNIA STATE AGENCY

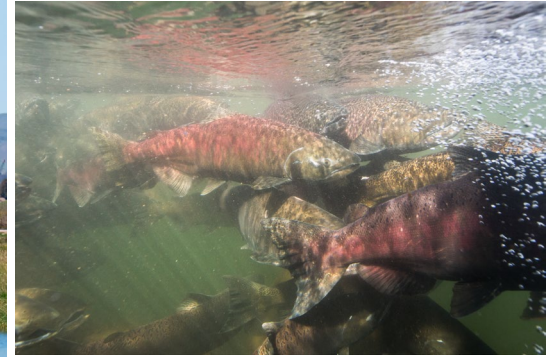
## Coequal Goals

*“Achieve the two coequal goals of providing a more reliable water supply for California and protecting, restoring, and enhancing the Delta ecosystem. The coequal goals shall be achieved in a manner that protects and enhances the unique cultural, recreational, natural resource, and agricultural values of the Delta as an evolving place.”*  
*(Water Code section 85054).*



# Delta Reform Act – Objectives

- Manage the Delta's water and environmental resources and the water resources of the State over the long term
- Promote statewide water conservation, water use efficiency, and sustainable water use
- Improve the water conveyance system and expand statewide water storage



## Reduced Reliance – State Policy

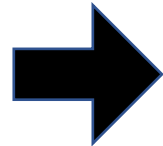
*“The policy of the State of California is to reduce reliance on the Delta in meeting California’s future water supply needs through a statewide strategy of investing in improved regional supplies, conservation, and water use efficiency.” (Water Code section 85021)*



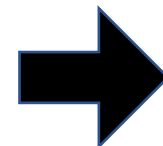
# Delta Plan Policy WR P1

Water shall not be exported from, transferred through, or used in the Delta if ***all*** of the following apply:

(a)(3) The export, transfer, or use would have a significant adverse environmental impact in the Delta.



(a)(1) One or more water suppliers have failed to adequately contribute to reduced reliance on the Delta consistent with the requirements in (c)(1).



(a)(2) That failure has significantly caused the need for the export, transfer, or use.



(c)(1) Water suppliers that have done all of the following are contributing to reduced reliance on the Delta and improved regional self-reliance and are consistent with this policy:

- Completed a current Urban or Agricultural Water Management Plan. (c)(1)(A)
- Commenced implementation of Management Plan programs and projects to reduce reliance on the Delta. (c)(1)(B)
- Management plans include expected outcome for measurable reduction in amount or percentage of water used from the Delta. (c)(1)(C)

# Delta Plan Recommendations

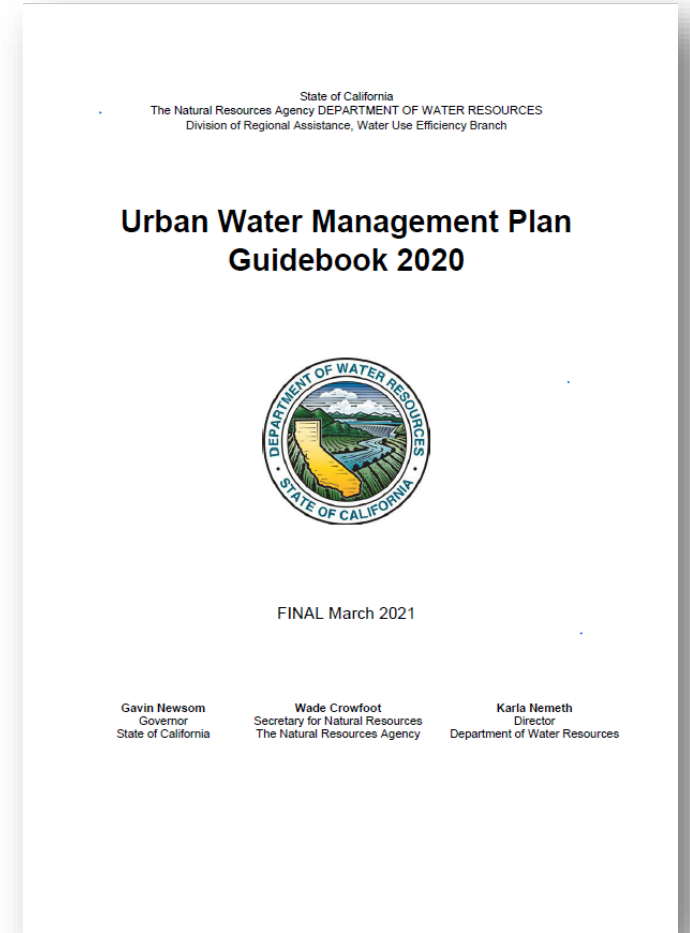


## **WR R4** – Expanded Water Supply Reliability Element

- “As part of an UWMP, AWMP, or Integrated Water Management Plan...” information about the supplier’s planned investments in water conservation and water supply development...”

## **WR R5** – Develop Water Supply Reliability Element Guidelines

- “...guidelines for the preparation of a water supply reliability element...”



# Delta Plan Performance Measures

The screenshot shows the website for the Delta Stewardship Council, specifically the page for 'Water Supply Reliability'. The page has a blue header with the CA.GOV logo, social media icons, and the text 'Delta Stewardship Council' and 'Settings'. Below the header is a navigation bar with 'DELTA STEWARDSHIP COUNCIL', 'Delta Plan Performance Measures', and menu items for 'PERFORMANCE MEASURES', '2021 YEAR IN REVIEW', 'ABOUT', and 'CONTACT'. The main content area has a breadcrumb trail: 'Performance Measures > Water Supply > Water Supply Reliability'. The title 'Water Supply Reliability' is prominently displayed, followed by the subtitle 'Outcome Performance Measure 3.4, Last updated: June 17, 2021 | About this Measure'. A blue box contains the text: 'Urban suppliers should ensure their water sources meet demand during dry years without increasing reliance on Delta water supplies.' To the right is an image of a dam. Below this is the section 'The Measure' with a description: 'Water contractors or urban water suppliers that are within the Delta watershed, or those relying on water from the Delta watershed, demonstrate reliability during single and multiple dry years through their Urban Water Management Plans (UWMPs)'. There are two columns: 'EXPECTATIONS' and 'PERFORMANCE METRICS'. The 'PERFORMANCE METRICS' column contains two bullet points: 'Percentage of Delta-reliant contractors or suppliers projecting reliability during a single dry year' and 'Percentage of Delta-reliant contractors or suppliers projecting reliability through three dry years'. At the bottom, there is a heading 'Water Supply Reliability by Hydrologic Region'.

CA.GOV Share: f t in e Delta Stewardship Council Settings

DELTA STEWARDSHIP COUNCIL  
Delta Plan Performance Measures

PERFORMANCE MEASURES 2021 YEAR IN REVIEW ABOUT CONTACT

Performance Measures > Water Supply > Water Supply Reliability

## Water Supply Reliability

Outcome Performance Measure 3.4, Last updated: June 17, 2021 | [About this Measure](#)

Urban suppliers should ensure their water sources meet demand during dry years without increasing reliance on Delta water supplies.

### The Measure

Water contractors or urban water suppliers that are within the Delta watershed, or those relying on water from the Delta watershed, demonstrate reliability during single and multiple dry years through their Urban Water Management Plans (UWMPs).

**EXPECTATIONS**  
Suppliers relying on the Delta watershed should account for decreased availability in their projections during dry years and should demonstrate supply reliability through their UWMPs.

**PERFORMANCE METRICS**

- Percentage of Delta-reliant contractors or suppliers projecting reliability during a single dry year
- Percentage of Delta-reliant contractors or suppliers projecting reliability through three dry years

### Water Supply Reliability by Hydrologic Region

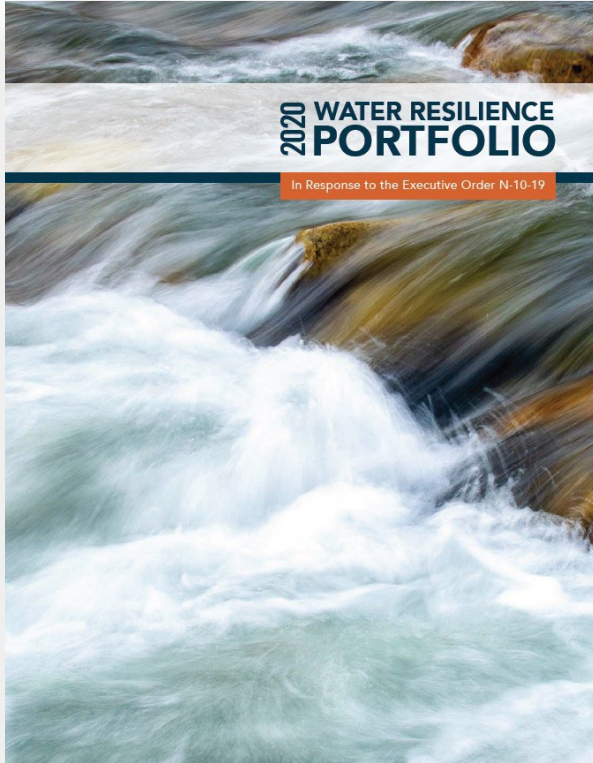
**PM 3.1 – Urban Water Use Efficiency**

**PM 3.2 – Alternative Water Supplies**

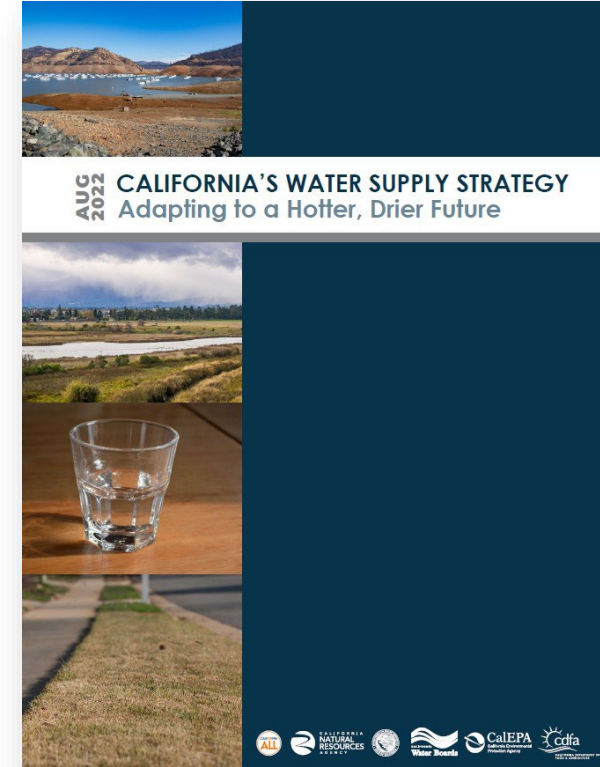
**PM 3.4 – Water Supply Reliability**

**PM 3.6 – Agricultural Water Planning**

# Statewide Water Supply Reliability – Call to Action



A suite of actions to meet California's water needs through the 21<sup>st</sup> Century



An immediate list of implementable actions to address a projected 10% reduction to water supplies by 2040



# Today's Presentations and Panel Members



Wade Crowfoot, Secretary of California Natural Resources Agency



Adel Hagekhalil, General Manager of Metropolitan Water District



Barbara Romero, Director and General Manager of LASAN



**COACHELLA VALLEY  
WATER DISTRICT**

Robert Cheng,  
Assistant General Manager

# Thank you

Connect with us



Scan the QR code  
to subscribe to our  
listserv



[Deltacouncil.ca.gov](http://Deltacouncil.ca.gov)



[@DeltaCouncil](https://twitter.com/DeltaCouncil)



[@delastewardshipcouncil](https://www.instagram.com/delastewardshipcouncil)



[Delta Stewardship Council](https://www.linkedin.com/company/Delta-Stewardship-Council)



[@delastewardshipcouncil](https://www.facebook.com/delastewardshipcouncil)