

MAY 2021

Delta Levees Investment Strategy (DLIS) Update



**Delta
Stewardship
Council**

A CALIFORNIA STATE AGENCY

Agenda

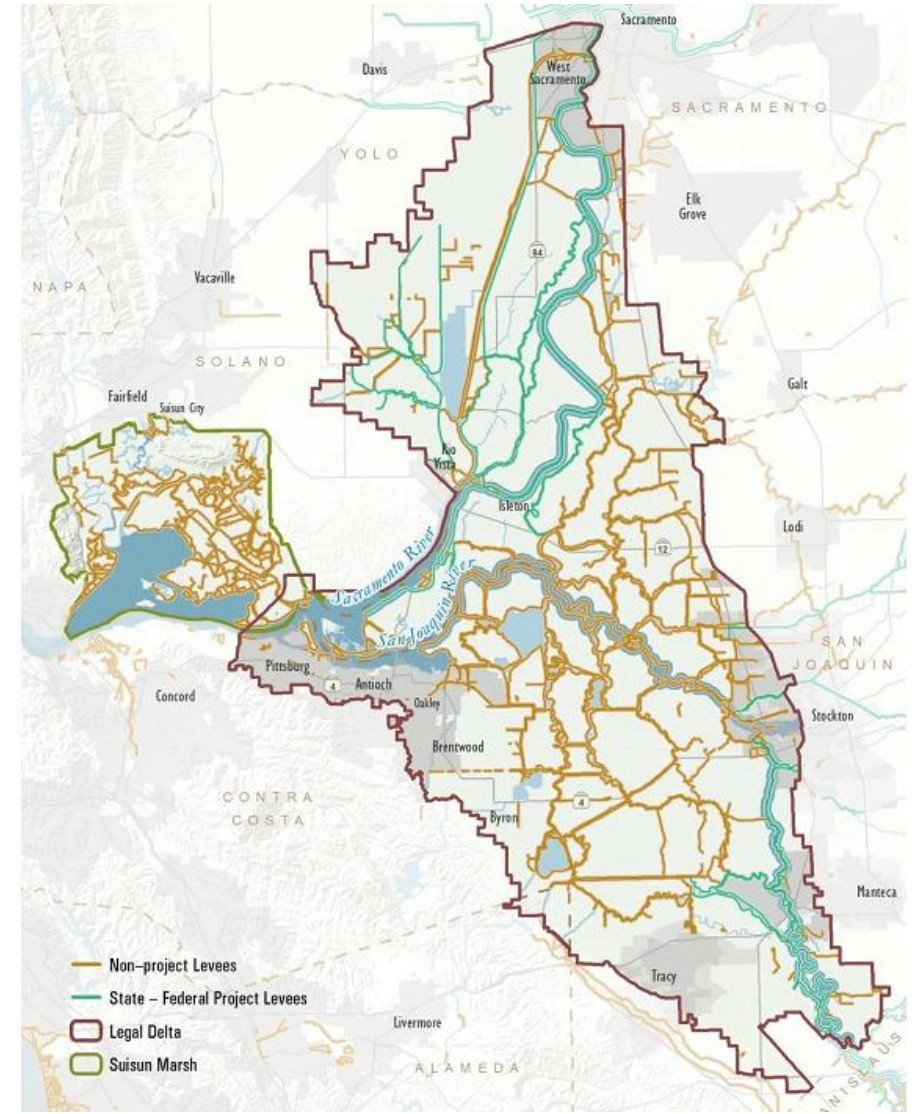
1. Background
2. DLIS Development Process
3. Risk Analysis Update
4. Modified Preliminary Draft Regulatory Language
5. CEQA Considerations
6. Next Steps

01.

Background

Background

- Both project levees and non-project levees are located in the Delta
- Many State programs provide financial assistance to maintain and improve Delta levees
- No comprehensive strategy to prioritize levee investments



Delta Reform Act

Wat. Code Sec. 85306

“The council, in consultation with the Central Valley Flood Protection Board, shall recommend in the Delta Plan priorities for state investment in levee operation, maintenance, and improvements in the Delta, including both levees that are part of the State Plan of Flood Control and nonproject levees.”



02.

DLIS
DEVELOPMENT
PROCESS

DLIS Process

- In 2014 Council began formulating a comprehensive method to analyze State interests and risks in the Delta
 - *State interests*
 - risk to public safety, property, infrastructure
 - water supply reliability
 - Delta ecosystem
 - unique Delta as Place attributes
 - *Risk*
 - probability x consequences
 - Decision support tool (DST) to support deliberations
- Prioritization: Very-High, High, and Other

DLIS Process – Key Milestones

- State Investment in Delta Levees: Key Issues (2014)
- Delta Flood Management Investment Strategy Principles (2015)
- Independent Scientific Review Panel Report (2015)
- DLIS Risk Analysis Methodology Report (2017)
- DLIS Delta Plan Amendment (April 2018)
- DWR Publishes New 2017 LiDAR (June 2019)
- Council Initiates Rulemaking for Policy RR P1 (July 2019)
- Council Withdraws from Rulemaking (March 2020)

03.

RISK ANALYSIS UPDATE

Key Data Changes

- Updates to Delta topography using 2017 LiDAR data
- Updates to hydrologic data using new information from Delta Adapts
- Updates to fragility curves to reflect current levee geometry



Changes to Risk Between DLIS 2018 and DLIS 2021

- Risk to Life (EAF) ↓
- Risk to Property (EAD) ↓
- Risk to Habitat (Acres Flooded/Year) ↑
- Risk to Water Supply —



Changes to Risk Between DLIS 2018 and DLIS 2021 Cont.

- Risk to Delta as Place
 - Prime Farmland —
 - Legacy Towns —
 - Public Roadways —

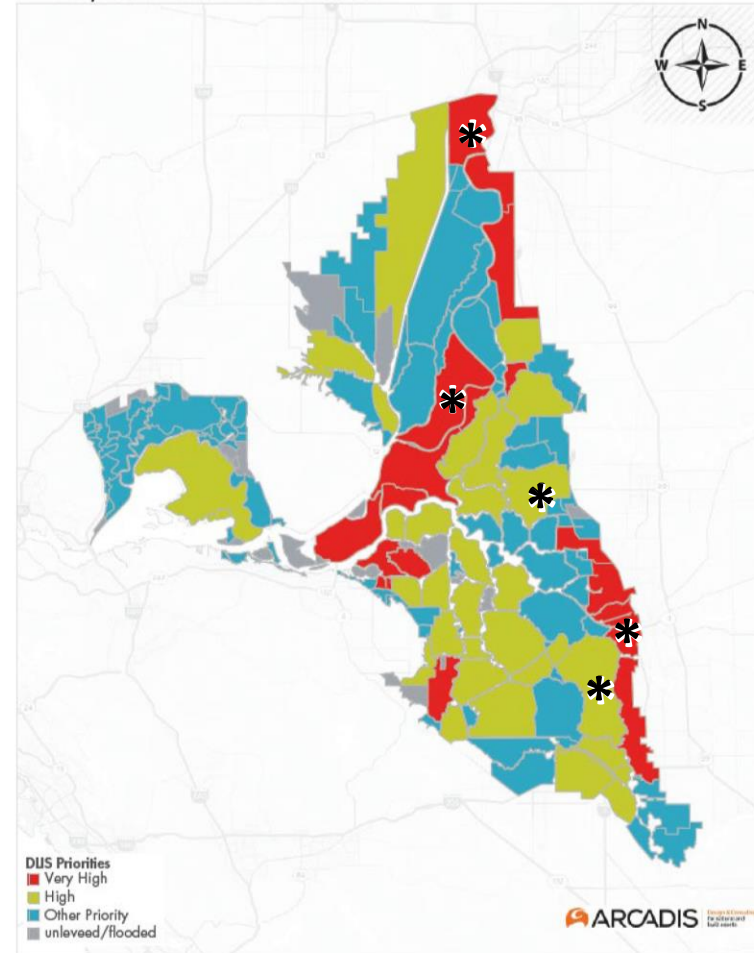


Changes to Island and Tract Priorities

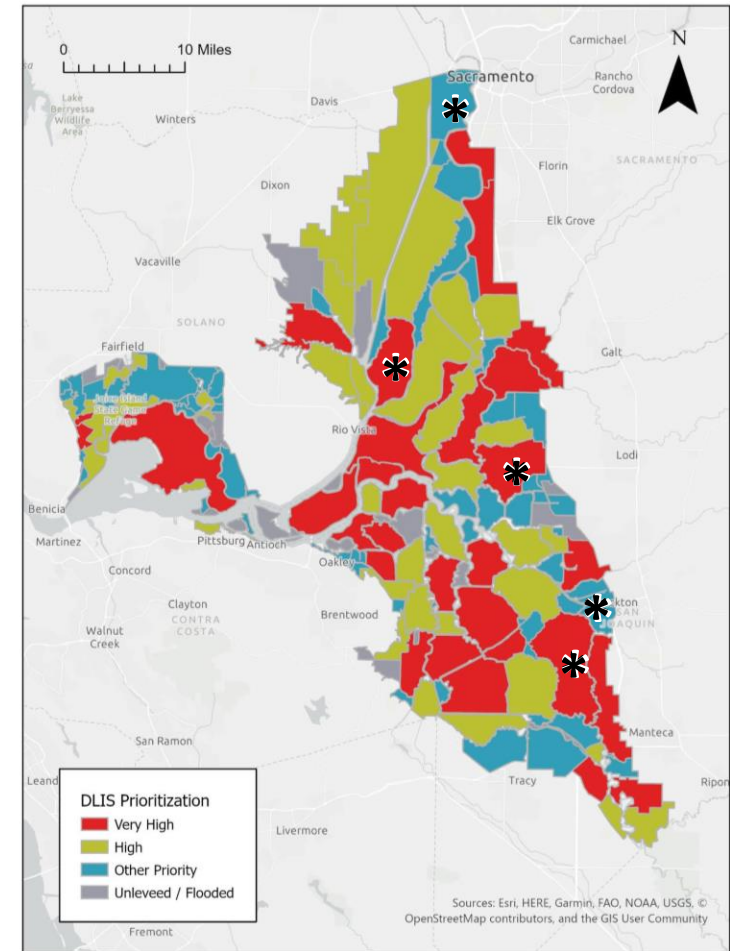
- Very High Priority Islands and Tracts
- High Priority Islands and Tracts
- Other Priority Islands and Tracts



Preliminary Draft Delta Levees Investment Priorities 2017

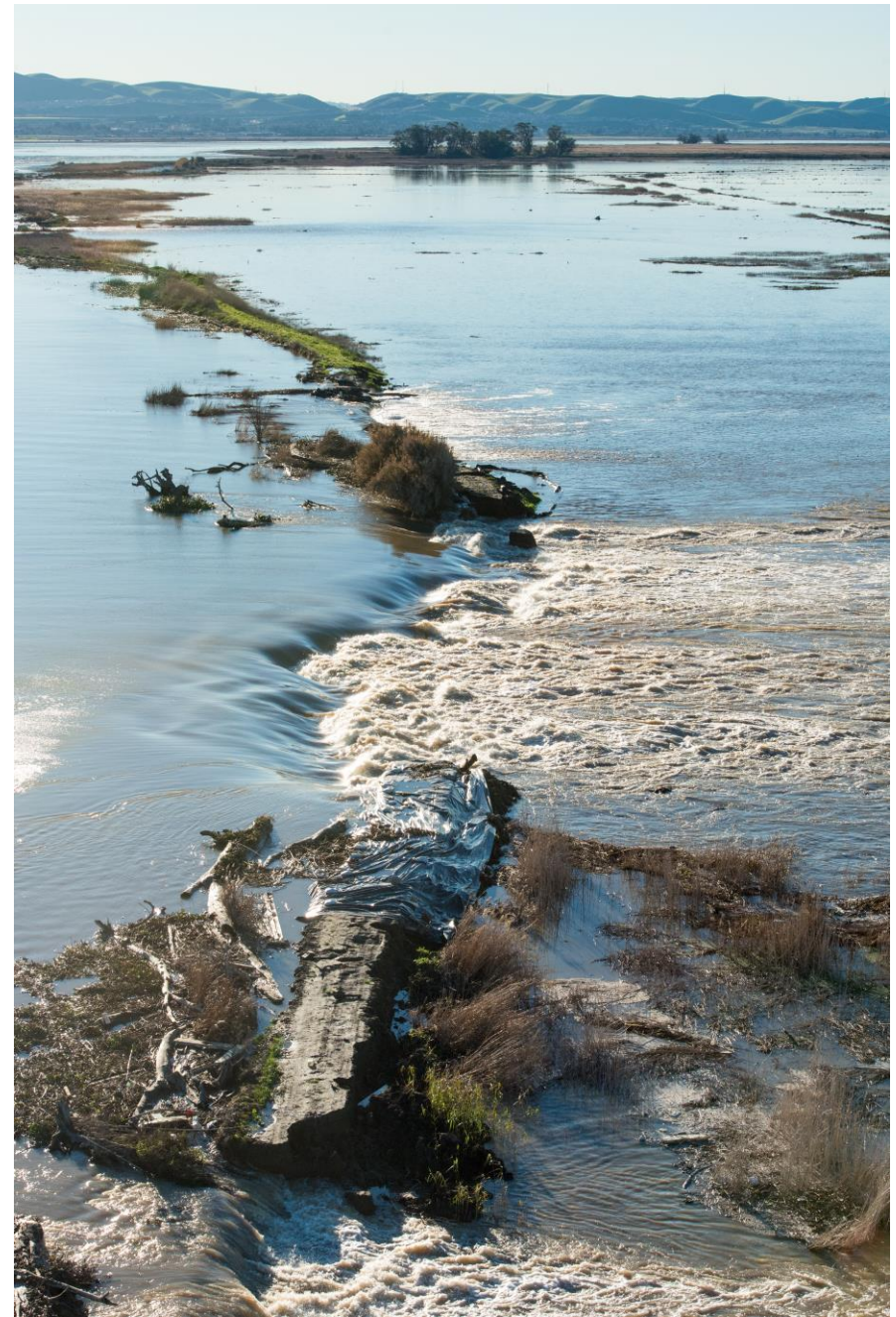


Preliminary Draft Delta Levees Investment Priorities 2021

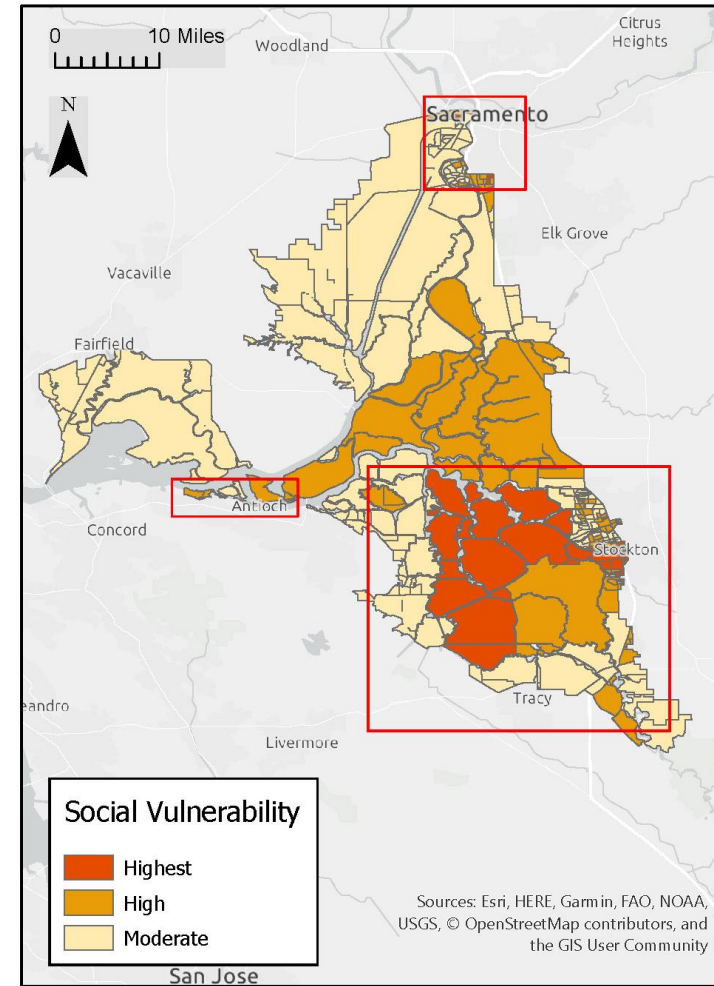
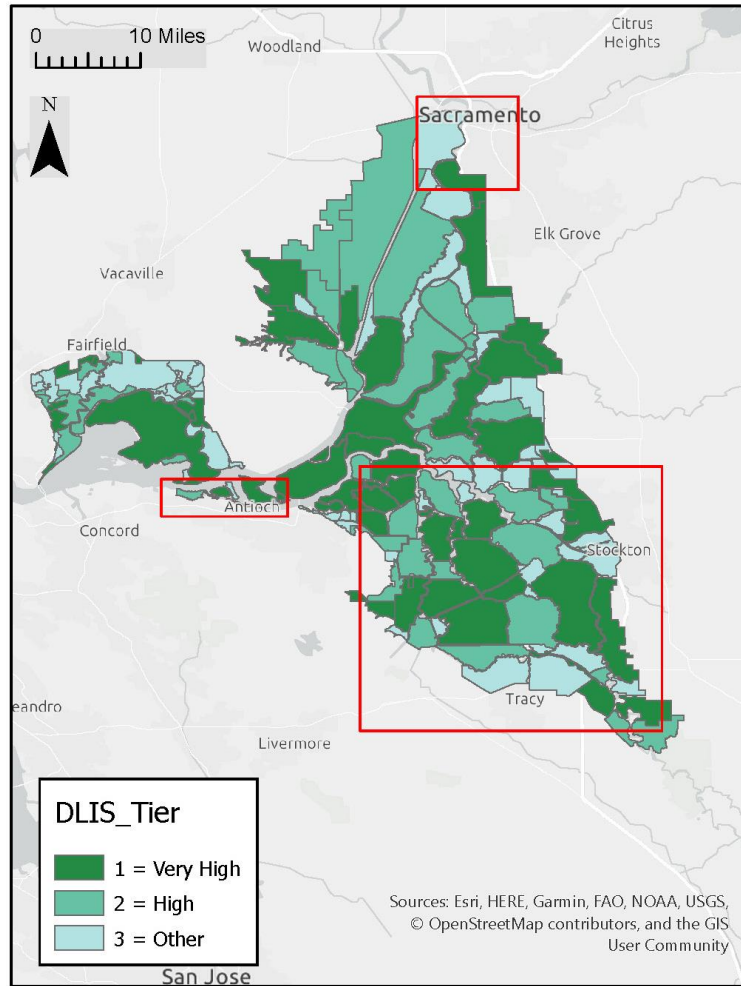


New Considerations

- Climate Change
 - Delta Adapts provides a better understanding of flood risk into the future
 - Adaptation Strategy will inform future DLIS updates



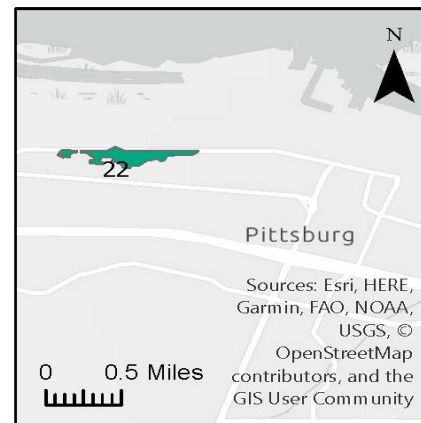
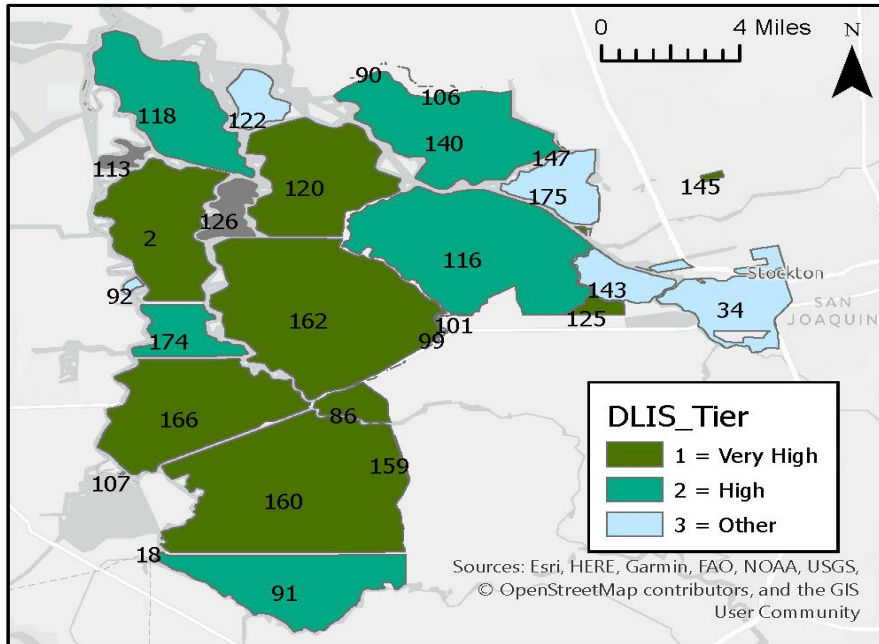
Social Vulnerability



Regions Containing Highest Vulnerability Areas

Social Vulnerability

DLIS Prioritization In Most Vulnerable Areas*



DLIS ID	Name	Total Population	Vulnerable Population	DLIS Tier
2	BACON ISLAND	0	0	1
5	BISHOP/DLIS-14 (NORTH STOCKTON)	23451	2573	1
86	DREXLER TRACT	17	17	1
162	JONES TRACT (LOWER AND UPPER)	104	104	1
117	MAINTENANCE AREA 9 NORTH	54104	29030	1
120	MCDONALD ISLAND	22	22	1
125	MIDDLE & UPPER ROBERTS ISLAND	377	377	1
145	NORTH STOCKTON	62840	33908	1
160	UNION ISLAND WEST	198	198	1
166	VICTORIA ISLAND	130	130	1
18	CLIFTON COURT FOREBAY	2	0	2
22	DLIS-01 (PITTSBURG AREA)	269	108	2
91	FABIAN TRACT	83	83	2
116	LOWER ROBERTS ISLAND	39	39	2
118	MANDEVILLE ISLAND	82	82	2
140	RINDGE TRACT	86	86	2
147	SHIMA TRACT	1288	81	2
159	UNION ISLAND EAST	309	309	2
174	WOODWARD ISLAND	8	8	2
34	CENTRAL STOCKTON	49429	34465	3
90	EMPIRE TRACT	29	29	3
92	FAY ISLAND	2	2	3
99	HOLT STATION	1	1	3
101	HONKER LAKE TRACT	27	27	3
106	KING ISLAND	50	50	3
122	MEDFORD ISLAND	3	3	3
143	ROUGH AND READY ISLAND	0	0	3
171	WEST SACRAMENTO	39649	11565	3
175	WRIGHT-ELMWOOD TRACT	5	5	3
23	DLIS-02 (ANTIOCH AREA)	66	66	<Null>
93	FRANK'S TRACT	20	0	<Null>
107	KINGS ISLAND	0	0	<Null>
113	LITTLE MANDEVILLE ISLAND	0	0	<Null>
126	MILDRED ISLAND	0	0	<Null>

*Populations within the areas shown on this map were determined to be the most vulnerable to the effects of climate change based on the Delta Stewardship Council's Vulnerability Assessment

04.

MODIFIED
PRELIMINARY
STAFF DRAFT
REGULATORY
LANGUAGE

Overview of Suggested Staff Revisions

- Proposed Definitions
- DLIS Priorities
- DWR Reporting Requirements

05.

CEQA

CONSIDERATIONS

California Environmental Quality Act

- Council is preparing an Addendum to Delta Plan Amendments Program EIR
- Staff will present Addendum to Council for approval prior to seeking direction to reinitiate Rulemaking for Delta Plan Policy RR P1

06.

NEXT STEPS