

SGMA

# Groundwater Sustainability Plan Review

Anthony Navasero and Molly Williams

Planning and Performance

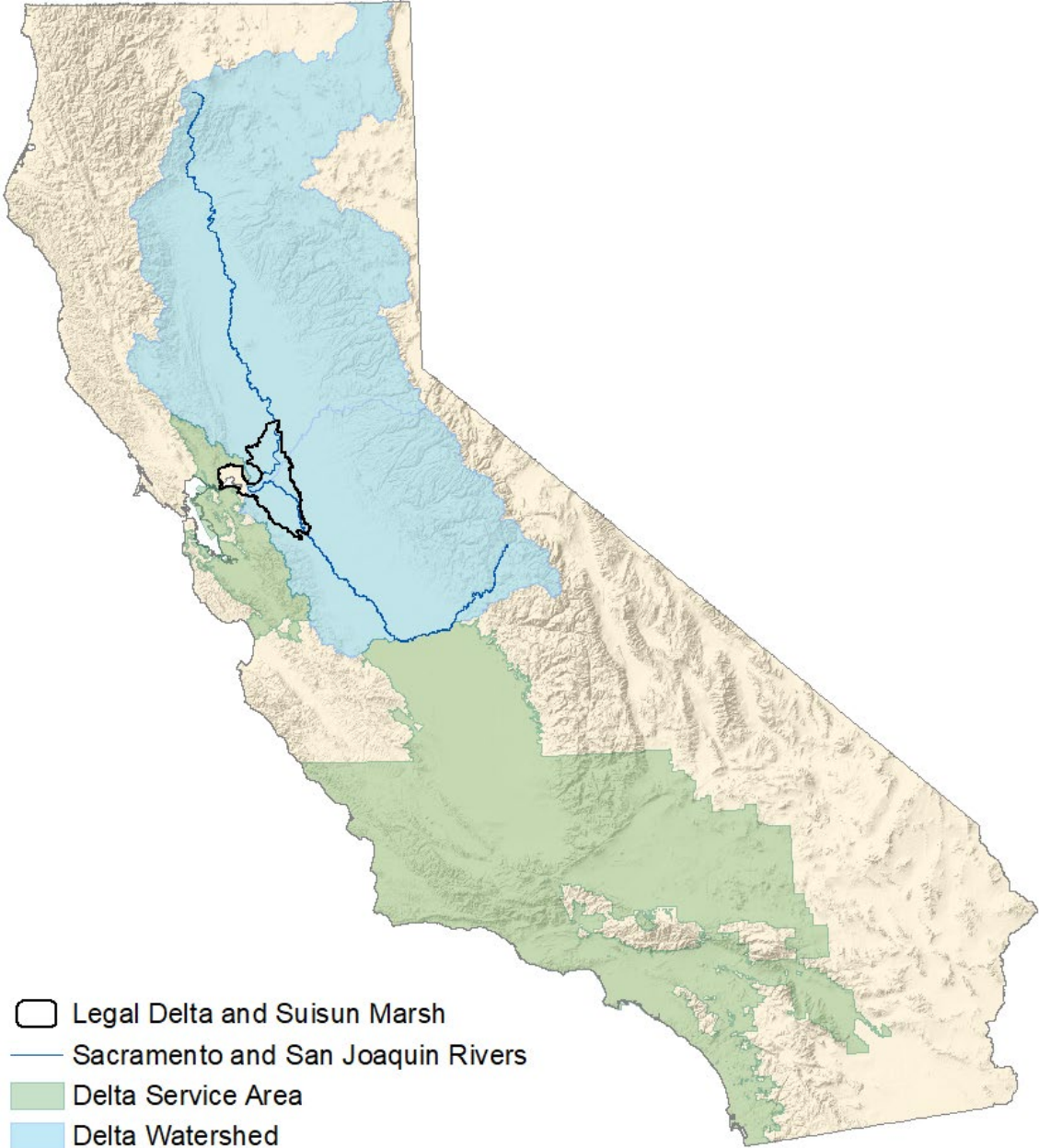
24 September 2020



**Delta  
Stewardship  
Council**

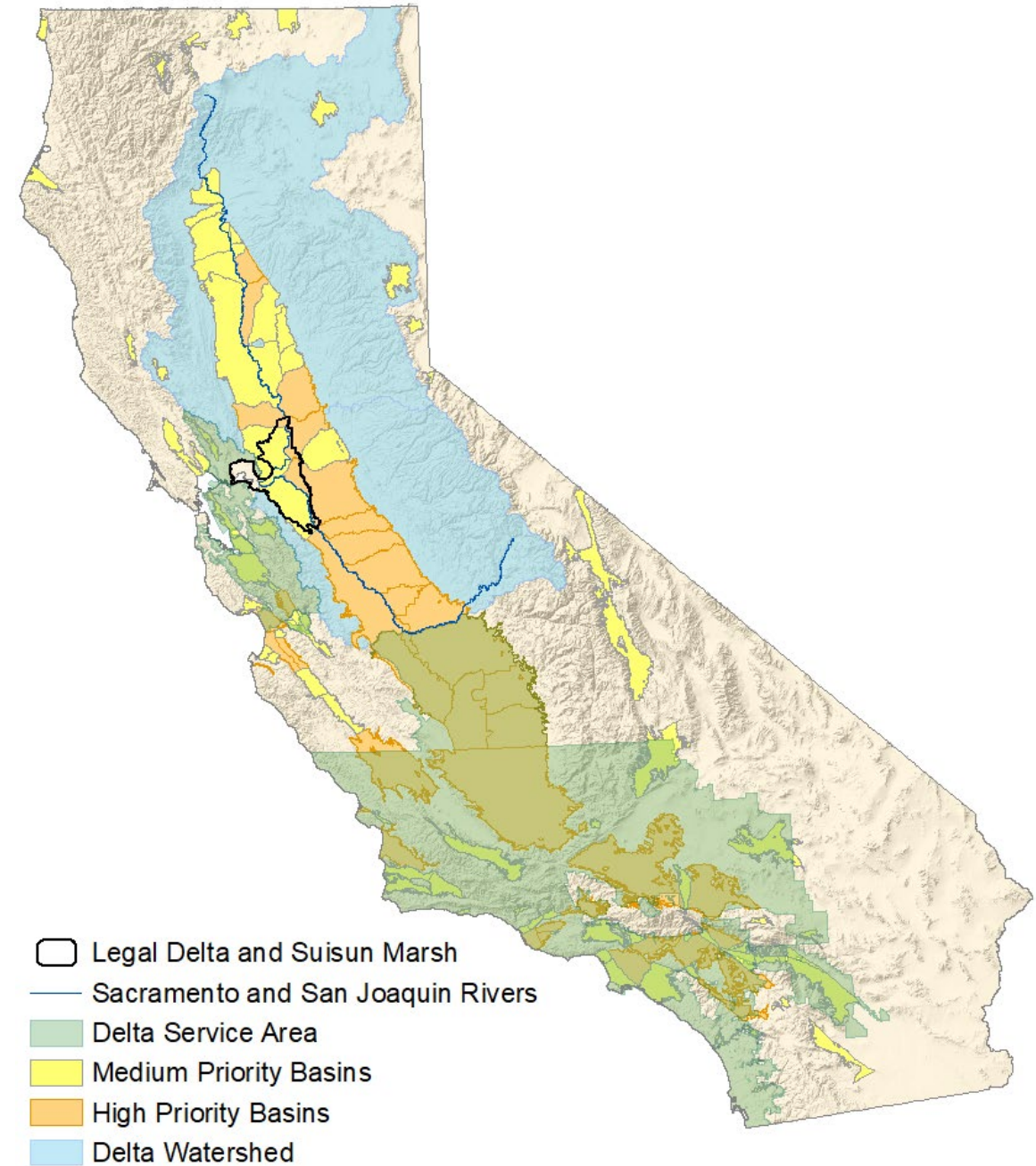
A CALIFORNIA STATE AGENCY

# The Delta's Reach



# Medium and High Priority Basins

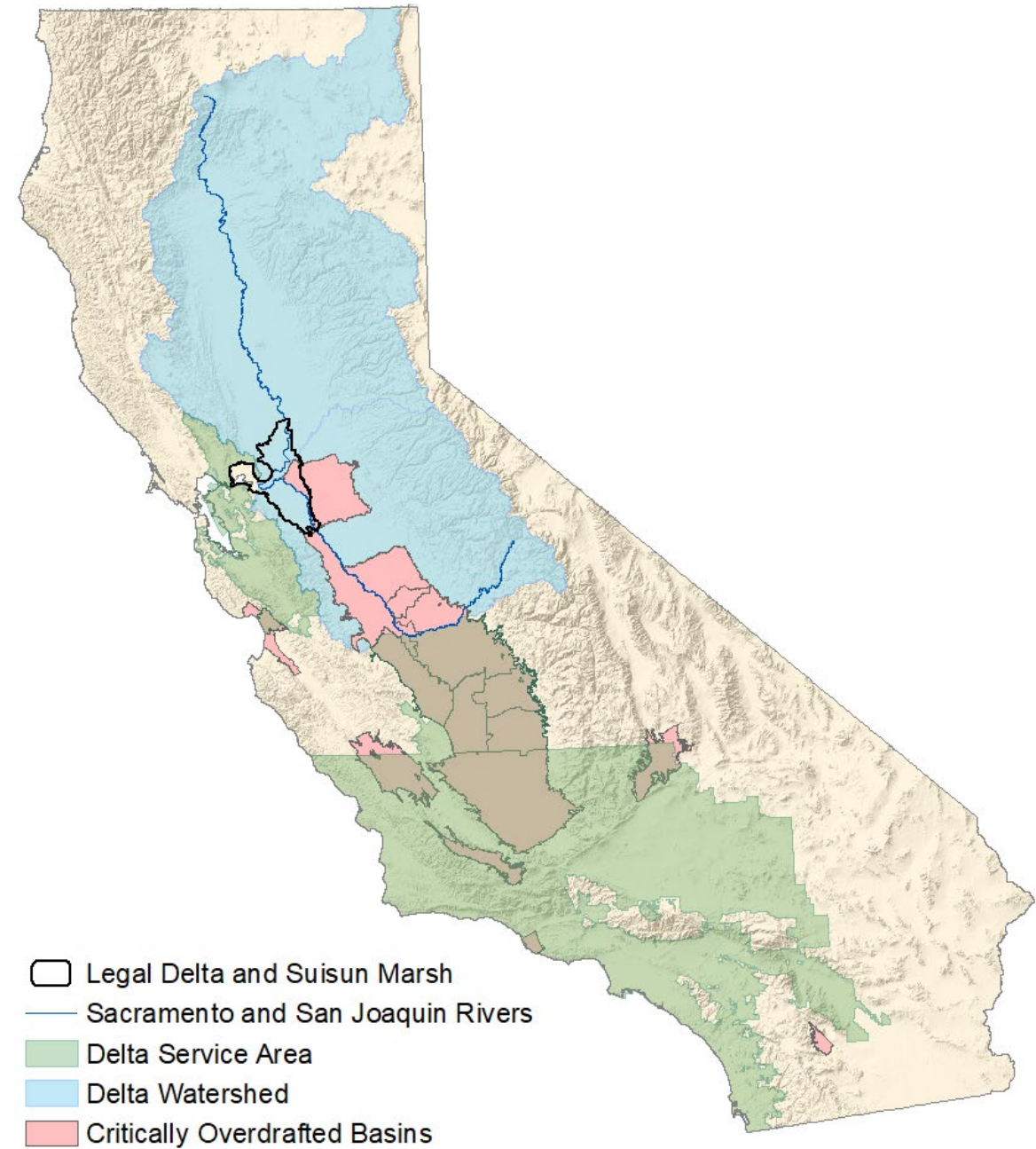
- 94/515 basins required to submit GSPs
- Significant overlap between basins and Delta watershed and Delta service areas
- 2005-2010: 1.1-2.6 million acre-feet per year of overdraft in CA (pre-drought)<sup>1</sup>



<sup>1</sup> [https://cawaterlibrary.net/wp-content/uploads/2017/05/GWU2013\\_Combined\\_Statewide\\_Final.pdf](https://cawaterlibrary.net/wp-content/uploads/2017/05/GWU2013_Combined_Statewide_Final.pdf)

# Critically Over-drafted Basins

- 21 basins
- 7 in the Delta watershed
- 17 in the Delta service area
- Not all high/med priority basins are critically over-drafted



# Critically Over-drafted Basins

- Reviewed 55 GSPs submitted in first round
  - Second wave of plans in 2022 for non-critically over-drafted basins
- 500+ projects and management actions
- Reviewed all submitted GSPs to understand potential of projects to impact the Delta



Source: DWR, 2020.

# Common GSP Projects & Actions

- Capture and storage of flood/storm water
- Water trading
- Water recycling and treatment
- Physical infrastructure improvements
- Demand-side
- PPIC: 80% are supply-side projects, 20% demand-side<sup>2</sup>



<sup>2</sup> [ppic.org/wp-content/uploads/ppic-review-of-groundwater-sustainability-plans-in-the-san-joaquin-valley.pdf](http://ppic.org/wp-content/uploads/ppic-review-of-groundwater-sustainability-plans-in-the-san-joaquin-valley.pdf)

Source: DWR, 2020.

# Relevance to Delta Water Supplies

- GSPs do not specifically mention reducing reliance on the Delta
- More than a third of plans identify increasing imported water from outside the basin
  - Central Valley Project/State Water Project are potential sources
- Nearly half of plans identify stormwater capture as a potential strategy to achieve groundwater sustainability
  - For basins upstream of the Delta, these strategies could result in reduced flows into the Delta.



Source: DWR, 2020.

# Takeaways and next steps

- GSPs are exempt from CEQA, but individual projects may/may not be covered actions
- Cumulative effects from supply-side projects could increase demand for water from the Delta and the Delta watershed
- Plan to monitor and review future GSPs and track implementation of projects



Source: DWR, 2020.



Thank you!

