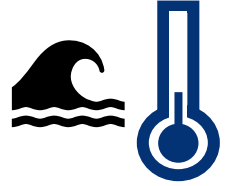
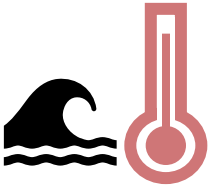


Relationships between water temperature and estuarine inflow

Major findings:



- **Negative** temperature-inflow relationships
 - Higher inflow = **cooler** water
 - Most common



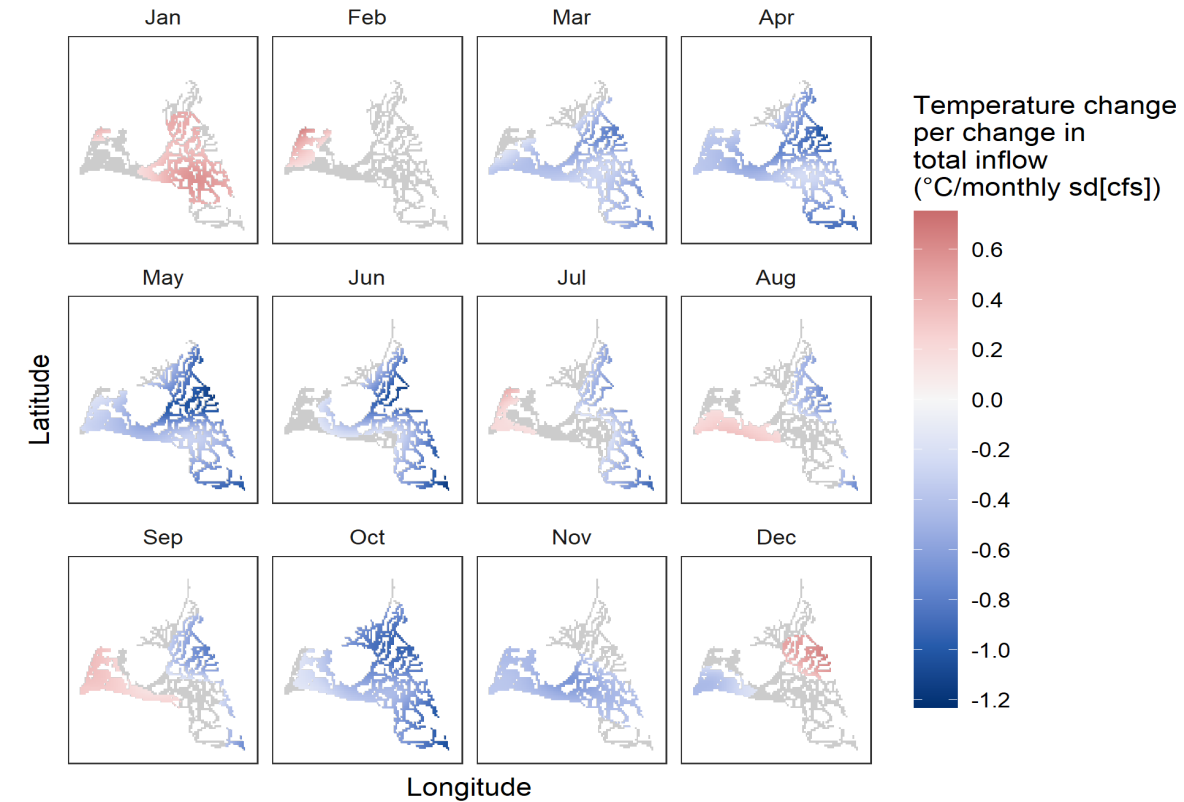
- **Positive** temperature-inflow relationships
 - Higher inflow = **warmer** water
 - Occurs during winter and downstream in the summer.

Take-away-point(s):

Understanding long-term patterns is important because ...

1. Temperature drives ecosystem functions from subcellular to community scales
2. Many species including managed fishes are sensitive to temperature changes, a management need highlighted by the 2022-2026 Science Action Agenda Management Need 5

Fig 4 (Bashevkin & Mahardja, 2022)



NOTE: This study looked at correlation, not causation, and did not evaluate the impact of dam releases on water temperature